

KMH-233

Chemical Properties

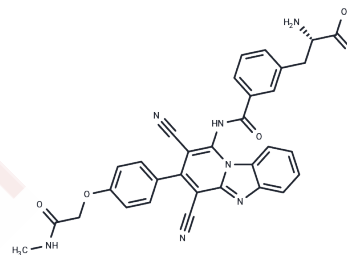
CAS No. : 1941174-13-5

Formula: C32H25N7O5

Molecular Weight: 587.58

Storage: Powder: -20°C for 3 years | In solvent: -80°C for 1 year

Actual storage temperature shall be subject to the COA.



Biological Description

Description	KMH-233 is a potent selective LAT1 inhibitor 1 that inhibits the uptake of LAT1 substrate, L-leucine, and cell growth. Even at low concentrations (25 μ M), it significantly enhanced the efficacy of betastatin and cisplatin.
Targets(IC50)	Others

Preparing Stock Solutions

	1mg	5mg	10mg
1 mM	1.7019 mL	8.5095 mL	17.019 mL
5 mM	0.3404 mL	1.7019 mL	3.4038 mL
10 mM	0.1702 mL	0.8509 mL	1.7019 mL
50 mM	0.034 mL	0.1702 mL	0.3404 mL

Please select the appropriate solvent to prepare the stock solution, according to the solubility of the product in different solvents. Please use it as soon as possible.

Note: The dilution table applies only to solid products. For liquid products, please calculate the stock solution based on the stated concentration and/or density.

Reference

A Selective and Slowly Reversible Inhibitor of L-Type Amino Acid Transporter 1 (LAT1) Potentiates Antiproliferative Drug Efficacy in Cancer Cells Kristiina M. Huttunen, Mikko Gynther, Johanna Huttunen, Elena Puris, Julie A. Spicer, and William A. Denny Publication Date (Web): June 2, 2016 (Article) doi: 10.1021/acs.jmedchem.6b00190

Inhibitor · Natural Compounds · Compound Libraries · Recombinant Proteins

This product is for Research Use Only · Not for Human or Veterinary or Therapeutic Use

Tel:781-999-4286 E_mail:info@targetmol.com Address:34 Washington Street,Wellesley Hills,MA 02481