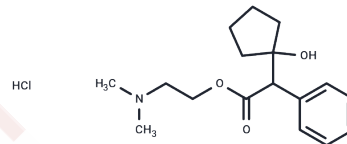


Cyclopentolate Hydrochloride

Chemical Properties

CAS No. :	5870-29-1
Formula:	C ₁₇ H ₂₆ ClNO ₃
Molecular Weight:	327.85
Storage:	Powder: -20°C for 3 years In solvent: -80°C for 1 year Actual storage temperature shall be subject to the COA.



Biological Description

Description	Cyclopentolate Hydrochloride is a muscarinic acetylcholine receptors antagonist with Kis of 1.62, 27.5, and 2.63 nM for M1, M2, and M3 receptors, respectively.
Targets(IC50)	AChR
In vitro	Cyclopentolate Hydrochloride inhibits carbachol-induced contraction of isolated human iris sphincter, circular ciliary muscle, and longitudinal ciliary muscle (Kbs = 7.9, 15.8, and 12.5 nM, respectively[1]).

Solubility Information

Solubility	DMSO: 12 mg/mL (36.6 mM), Sonication is recommended. (< 1 mg/ml refers to the product slightly soluble or insoluble)
------------	---

Preparing Stock Solutions

	1mg	5mg	10mg
1 mM	3.0502 mL	15.2509 mL	30.5018 mL
5 mM	0.610 mL	3.0502 mL	6.1004 mL
10 mM	0.305 mL	1.5251 mL	3.0502 mL
50 mM	0.061 mL	0.305 mL	0.610 mL

Please select the appropriate solvent to prepare the stock solution, according to the solubility of the product in different solvents. Please use it as soon as possible.

Note: The dilution table applies only to solid products. For liquid products, please calculate the stock solution based on the stated concentration and/or density.

Reference

Ishikawa H , Desantis L , Patil P N . Selectivity of Muscarinic Agonists Including (\pm)-Aceclidine and Antimuscarinics on the Human Intraocular Muscles[J]. Journal of Ocular Pharmacology & Therapeutics, 1998, 14(4):363-373.
Akemi Wakayama.et al.Incidence of Side Effects of Topical Atropine Sulfate and Cyclopentolate Hydrochloride for Cycloplegia in Japanese Children: A Multicenter Study.Multicenter Study Jpn J Ophthalmol. 2018 Sep;62(5):531-536.

Inhibitor · Natural Compounds · Compound Libraries · Recombinant Proteins

This product is for Research Use Only· Not for Human or Veterinary or Therapeutic Use

Tel:781-999-4286 E_mail:info@targetmol.com Address:34 Washington Street,Wellesley Hills,MA 02481