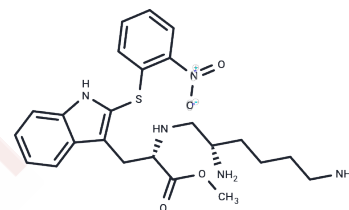


Lys-psi(CH₂NH)-trp(nps)-ome

Chemical Properties

CAS No. : 141365-20-0
 Formula: C₂₄H₃₁N₅O₄S
 Molecular Weight: 485.60
 Storage: Powder: -20°C for 3 years | In solvent: -80°C for 1 year
 Actual storage temperature shall be subject to the COA.



Biological Description

Description	Lys-psi(CH ₂ NH)-trp(nps)-ome peptide bond replaced by CH ₂ NH group.
Targets(IC ₅₀)	Others,Aminopeptidase

Preparing Stock Solutions

	1mg	5mg	10mg
1 mM	2.0593 mL	10.2965 mL	20.5931 mL
5 mM	0.4119 mL	2.0593 mL	4.1186 mL
10 mM	0.2059 mL	1.0297 mL	2.0593 mL
50 mM	0.0412 mL	0.2059 mL	0.4119 mL

Please select the appropriate solvent to prepare the stock solution, according to the solubility of the product in different solvents. Please use it as soon as possible.

Note: The dilution table applies only to solid products. For liquid products, please calculate the stock solution based on the stated concentration and/or density.

Reference

de Ceballos ML, Lopez AE, Harto JR, Bravo A, Gomez-Monterrey I, Gonzalez-Muñiz R, Garcia-Lopez MT, del Rio J. Prolonged antinociceptive activity of pseudodipeptide analogues of Lys-Trp(Nps) and Trp(Nps)-Lys. Peptides. 1992 Jan-Feb;13(1):63-7. PubMed PMID: 1620657.

Inhibitor · Natural Compounds · Compound Libraries · Recombinant Proteins

This product is for Research Use Only. Not for Human or Veterinary or Therapeutic Use

Tel:781-999-4286 E_mail:info@targetmol.com Address:34 Washington Street,Wellesley Hills,MA 02481