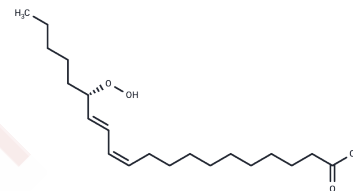


## 15(S)-HpEDE

## Chemical Properties

CAS No. :	145375-41-3
Formula:	C <sub>20</sub> H <sub>36</sub> O <sub>4</sub>
Molecular Weight:	340.504
Storage:	Powder: -20°C for 3 years   In solvent: -80°C for 1 year Actual storage temperature shall be subject to the COA.



## Biological Description

Description	15(S)-HpEDE is a monohydroperoxy polyunsaturated fatty acid produced by the action of 15-lipoxygenase on eicosadienoic acid. Although the biological activities of 15(S)-HpEDE have not been well characterized, it is expected to behave similarly to 15(S)-HpETE.
Targets(IC50)	Others

## Solubility Information

Solubility	DMF: >50 mg/mL (per Rao Maddipati), Sonication is recommended. Ethanol: >50 mg/mL (per Rao Maddipati), Sonication is recommended. PBS (pH 7.2): >1 mg/mL (from 13(S)-HODE), Sonication is recommended. DMSO: >50 mg/mL (per Rao Maddipati), Sonication is recommended. (< 1 mg/ml refers to the product slightly soluble or insoluble)
------------	--

## Preparing Stock Solutions

	1mg	5mg	10mg
1 mM	2.9369 mL	14.6843 mL	29.3686 mL
5 mM	0.5874 mL	2.9369 mL	5.8737 mL
10 mM	0.2937 mL	1.4684 mL	2.9369 mL
50 mM	0.0587 mL	0.2937 mL	0.5874 mL

Please select the appropriate solvent to prepare the stock solution, according to the solubility of the product in different solvents. Please use it as soon as possible.

Note: The dilution table applies only to solid products. For liquid products, please calculate the stock solution based on the stated concentration and/or density.

**Inhibitor · Natural Compounds · Compound Libraries · Recombinant Proteins**

This product is for Research Use Only · Not for Human or Veterinary or Therapeutic Use

Tel: 781-999-4286   E\_mail: info@targetmol.com   Address: 34 Washington Street, Wellesley Hills, MA 02481