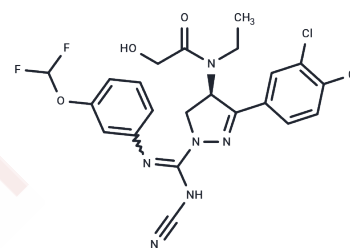


BAY-598 R-isomer

Chemical Properties

CAS No. :	1906920-28-2
Formula:	C ₂₂ H ₂₀ Cl ₂ F ₂ N ₆ O ₃
Molecular Weight:	525.34
Storage:	Powder: -20°C for 3 years In solvent: -80°C for 1 year Actual storage temperature shall be subject to the COA.



Biological Description

Description	BAY-598 R-isomer is the R-isomer of BAY589, which is used as a reference compound. It is an inhibitor of lysine N-methyltransferase (SMYD2) and is selective for SMYD2 over protease-activated receptor 1 (PAR1).
Targets(IC50)	Others, Histone Methyltransferase

Preparing Stock Solutions

	1mg	5mg	10mg
1 mM	1.9035 mL	9.5176 mL	19.0353 mL
5 mM	0.3807 mL	1.9035 mL	3.8071 mL
10 mM	0.1904 mL	0.9518 mL	1.9035 mL
50 mM	0.0381 mL	0.1904 mL	0.3807 mL

Please select the appropriate solvent to prepare the stock solution, according to the solubility of the product in different solvents. Please use it as soon as possible.

Note: The dilution table applies only to solid products. For liquid products, please calculate the stock solution based on the stated concentration and/or density.

Reference

- Eggert E, Hillig RC, Koehr S, Stöckigt D, Weiske J, Barak N, Mowat J, Brumby T, Christ CD, Ter Laak A, Lang T, Fernandez-Montalvan AE, Badock V, Weinmann H, Hartung IV, Baryte-Lovejoy D, Szewczyk M, Kennedy S, Li F, Vedadi M, Brown PJ, Santhakumar V, Arrowsmith CH, Stellfeld T, Stresemann C. Discovery and Characterization of a Highly Potent and Selective Aminopyrazoline-Based in Vivo Probe (BAY-598) for the Protein Lysine Methyltransferase SMYD2. *J Med Chem.* 2016 May 26;59(10):4578-600. doi: 10.1021/acs.jmedchem.5b01890. PubMed PMID: 27075367; PubMed Central PMCID: PMC4917279.
- Ahmed H, Duan S, Arrowsmith CH, Baryte-Lovejoy D, Schapira M. An Integrative Proteomic Approach Identifies Novel Cellular SMYD2 Substrates. *J Proteome Res.* 2016 Jun 3;15(6):2052-9. doi: 10.1021/acs.jproteome.6b00220. PubMed PMID: 27163177.

Inhibitor · Natural Compounds · Compound Libraries · Recombinant Proteins

This product is for Research Use Only · Not for Human or Veterinary or Therapeutic Use

Tel:781-999-4286 E_mail:info@targetmol.com Address:34 Washington Street,Wellesley Hills,MA 02481