

## Evenamide

## Chemical Properties

CAS No. : 1092977-61-1

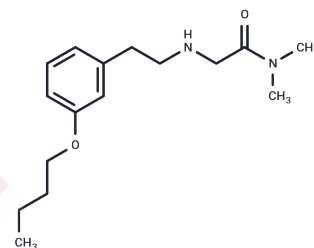
Formula: C<sub>16</sub>H<sub>26</sub>N<sub>2</sub>O<sub>2</sub>

Molecular Weight: 278.39

Store at low temperature

Storage: Powder: -20°C for 3 years | In solvent: -80°C for 1 year

Actual storage temperature shall be subject to the COA.



## Biological Description

Description	Evenamide (NW-3509) is a sodium channel blocker. Which shows efficacy in a broad spectrum of rodent models of psychosis, mania, depression, and aggressiveness.
Targets(IC50)	Sodium Channel

## Solubility Information

Solubility	DMSO: 290 mg/mL (1041.7 mM),Sonication is recommended. (< 1 mg/ml refers to the product slightly soluble or insoluble)
In vivo Formulation	10% DMSO+40% PEG300+5% Tween 80+45% Saline: 5 mg/mL (17.96 mM),Sonication is recommended. <i>Please add the solvents sequentially, clarifying the solution as much as possible before adding the next one. Dissolve by heating and/or sonication if necessary. Working solution is recommended to be prepared and used immediately. The formulation provided above is for reference purposes only. In vivo formulations may vary and should be modified based on specific experimental conditions.</i>

## Preparing Stock Solutions

	1mg	5mg	10mg
1 mM	3.5921 mL	17.9604 mL	35.9208 mL
5 mM	0.7184 mL	3.5921 mL	7.1842 mL
10 mM	0.3592 mL	1.796 mL	3.5921 mL
50 mM	0.0718 mL	0.3592 mL	0.7184 mL

Please select the appropriate solvent to prepare the stock solution, according to the solubility of the product in different solvents. Please use it as soon as possible.

Note: The dilution table applies only to solid products. For liquid products, please calculate the stock solution based on the stated concentration and/or density.

Reference

Valentina Zuliani, et al. Advances in Design and Development of Sodium Channel Blockers. Ion Channels and Their Inhibitors pp 79-115.

**Inhibitor · Natural Compounds · Compound Libraries · Recombinant Proteins**

This product is for Research Use Only· Not for Human or Veterinary or Therapeutic Use

Tel:781-999-4286 E\_mail:info@targetmol.com Address:34 Washington Street,Wellesley Hills,MA 02481