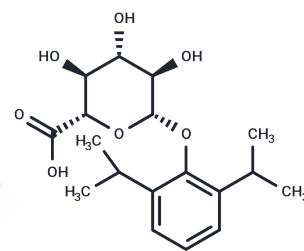


Propofol β -D-Glucuronide

Chemical Properties

CAS No. :	114991-26-3
Formula:	C ₁₈ H ₂₆ O ₇
Molecular Weight:	354.4
Storage:	Keep away from moisture Powder: -20°C for 3 years In solvent: -80°C for 1 year <small>Actual storage temperature shall be subject to the COA.</small>



Biological Description

Description	Propofol β -D-Glucuronide is the major inactive metabolite of isoproterenol sulfate (a short-acting anesthetic), mediated by UDP-glucuronosyltransferase (UGT), and can be used to study sleep deprivation (SD).
Targets(IC50)	Endogenous Metabolite, Drug Metabolite

Solubility Information

Solubility	DMSO: 20 mg/mL (56.43 mM), Sonication is recommended. DMF: 20 mg/mL (56.43 mM), Sonication is recommended. Ethanol: 20 mg/mL (56.43 mM), Sonication is recommended. (< 1 mg/ml refers to the product slightly soluble or insoluble)
------------	-------------------------------------------------------------------------------------------------------------------------------------------------------------------------------------------------------------------------------------------------

Preparing Stock Solutions

	1mg	5mg	10mg
1 mM	2.8217 mL	14.1084 mL	28.2167 mL
5 mM	0.5643 mL	2.8217 mL	5.6433 mL
10 mM	0.2822 mL	1.4108 mL	2.8217 mL
50 mM	0.0564 mL	0.2822 mL	0.5643 mL

Please select the appropriate solvent to prepare the stock solution, according to the solubility of the product in different solvents. Please use it as soon as possible.

Note: The dilution table applies only to solid products. For liquid products, please calculate the stock solution based on the stated concentration and/or density.

Reference

Tangtang, et al. Marker combination for diagnosing advanced colorectal tumor, and application thereof. Patent WO2023185709A1

Inhibitor · Natural Compounds · Compound Libraries · Recombinant Proteins

This product is for Research Use Only · Not for Human or Veterinary or Therapeutic Use

Tel:781-999-4286 E_mail:info@targetmol.com Address:34 Washington Street,Wellesley Hills,MA 02481