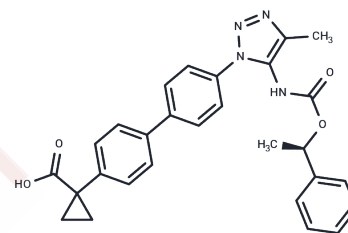


## LPA1 receptor antagonist 1

## Chemical Properties

CAS No. :	1396006-71-5
Formula:	C <sub>28</sub> H <sub>26</sub> N <sub>4</sub> O <sub>4</sub>
Molecular Weight:	482.53
Storage:	Powder: -20°C for 3 years   In solvent: -80°C for 1 year Actual storage temperature shall be subject to the COA.



## Biological Description

Description	LPA1 receptor antagonist 1 (LPA1 R antagonist 1) is a selective and potent lysophosphatidic acid (LPA1) receptor antagonist (IC <sub>50</sub> : 25 nM) for the study of idiopathic pulmonary fibrosis.
Targets(IC <sub>50</sub> )	LPA Receptor, LPL Receptor
In vitro	Compared to Ki16425 and AM095, LPA1 receptor antagonist 1 demonstrates superior anti-proliferative activity. It exhibits the highest selectivity for LPA1 and efficiently inhibits LPA-induced NHLF proliferation and contraction[1]. Similarly, LPA1 receptor antagonist 1 (compound 2) shows highly specific inhibitory activity against LPA1, with minimal inhibition of LPA3 even at relatively high concentrations.[1].
In vivo	Oral administration of LPA1 receptor antagonist 1 (compound 2) to mice led to a dose-dependent reduction in plasma histamine levels in a murine LPA challenge model [1].

## Preparing Stock Solutions

	1mg	5mg	10mg
1 mM	2.0724 mL	10.3621 mL	20.7241 mL
5 mM	0.4145 mL	2.0724 mL	4.1448 mL
10 mM	0.2072 mL	1.0362 mL	2.0724 mL
50 mM	0.0414 mL	0.2072 mL	0.4145 mL

Please select the appropriate solvent to prepare the stock solution, according to the solubility of the product in different solvents. Please use it as soon as possible.

Note: The dilution table applies only to solid products. For liquid products, please calculate the stock solution based on the stated concentration and/or density.

Reference

Qian Y, et al. Discovery of highly selective and orally active lysophosphatidic acid receptor-1 antagonists with potent activity on human lung fibroblasts. J Med Chem. 2012 Sep 13;55(17):7920-39.

**Inhibitor · Natural Compounds · Compound Libraries · Recombinant Proteins**

This product is for Research Use Only · Not for Human or Veterinary or Therapeutic Use

Tel:781-999-4286 E\_mail:info@targetmol.com Address:34 Washington Street,Wellesley Hills,MA 02481