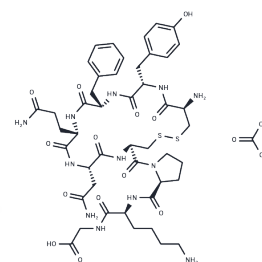


Lysipressin amide, acetate

Chemical Properties

CAS No. :	3037649-52-5
Formula:	C48H68N12O15S2
Molecular Weight:	1117.26
Storage:	Keep away from moisture Powder: -20°C for 3 years In solvent: -80°C for 1 year <small>Actual storage temperature shall be subject to the COA.</small>



Biological Description

Description	Lysipressin Acetate is an analog of vasopressin, a powerful vasopressin used to regulate blood pressure. Endogenous vasopressin in most mammalian species.
-------------	--

Preparing Stock Solutions

	1mg	5mg	10mg
1 mM	0.895 mL	4.4752 mL	8.9505 mL
5 mM	0.179 mL	0.895 mL	1.7901 mL
10 mM	0.0895 mL	0.4475 mL	0.895 mL
50 mM	0.0179 mL	0.0895 mL	0.179 mL

Please select the appropriate solvent to prepare the stock solution, according to the solubility of the product in different solvents. Please use it as soon as possible.

Note: The dilution table applies only to solid products. For liquid products, please calculate the stock solution based on the stated concentration and/or density.

Reference

- Rouille Y, Chauvet MT, Chauvet J, Acher R, Hadley ME. The distribution of lysine vasopressin (lysipressin) in placental mammals: a reinvestigation of the Hippopotamidae (*Hippopotamus amphibius*) and Tayassuidae (*Tayassu angulatus*) families. *Gen Comp Endocrinol.* 1988 Sep;71(3):475-83. PubMed PMID: 3192070.
- Acher R, Chauvet J. Structure, processing and evolution of the neurohypophysial hormone-neurophysin precursors. *Biochimie.* 1988 Sep;70(9):1197-207. Review. PubMed PMID: 3147712.
- Rouillé Y, Chauvet MT, Chauvet J, Acher R. Dual duplication of neurohypophysial hormones in an Australian marsupial: mesotocin, oxytocin, lysine vasopressin and arginine vasopressin in a single gland of the northern bandicoot (*Isodon macrourus*). *Biochem Biophys Res Commun.* 1988 Jul 15;154(1):346-50. PubMed PMID: 3395337.
- Chauvet J, Rouille Y, Chauvet MT, Acher R. Evolution of marsupials traced by their neurohypophysial hormones: microidentification of mesotocin and arginine vasopressin in two Australian families, Dasyuridae and Phascolarctidae. *Gen Comp Endocrinol.* 1987 Sep;67(3):399-408. PubMed PMID: 3666414.

Inhibitor · Natural Compounds · Compound Libraries · Recombinant Proteins

This product is for Research Use Only · Not for Human or Veterinary or Therapeutic Use

Tel:781-999-4286 E_mail:info@targetmol.com Address:34 Washington Street,Wellesley Hills,MA 02481