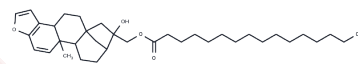


Kahweol palmitate

Chemical Properties

CAS No. :	81760-45-4
Formula:	C ₃₆ H ₅₆ O ₄
Molecular Weight:	552.83
Storage:	Powder: -20°C for 3 years In solvent: -80°C for 1 year Actual storage temperature shall be subject to the COA.



Biological Description

Description	Kahweol palmitate is a semi-synthetic derivative of kahweol, a natural product found in coffee beans. It exhibits a wide variety of biological activities, including inhibiting RANKL-induced osteoclast generation, inducing cell cycle arrest and apoptosis in oral squamous cell carcinoma cells, preventing aflatoxin B1-induced DNA adduct formation, and suppressing H ₂ O ₂ -induced DNA damage and oxidative stress.
Targets(IC50)	Others

Preparing Stock Solutions

	1mg	5mg	10mg
1 mM	1.8089 mL	9.0444 mL	18.0887 mL
5 mM	0.3618 mL	1.8089 mL	3.6177 mL
10 mM	0.1809 mL	0.9044 mL	1.8089 mL
50 mM	0.0362 mL	0.1809 mL	0.3618 mL

Please select the appropriate solvent to prepare the stock solution, according to the solubility of the product in different solvents. Please use it as soon as possible.

Note: The dilution table applies only to solid products. For liquid products, please calculate the stock solution based on the stated concentration and/or density.

Inhibitor · Natural Compounds · Compound Libraries · Recombinant Proteins

This product is for Research Use Only · Not for Human or Veterinary or Therapeutic Use

Tel: 781-999-4286 E_mail: info@targetmol.com Address: 34 Washington Street, Wellesley Hills, MA 02481