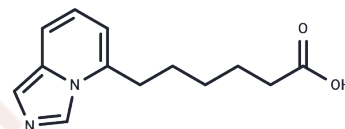


## Pirmagrel

## Chemical Properties

|                   |   |
|-------------------|---|
| CAS No. :         | 85691-74-3  |
| Formula:          | C <sub>13</sub> H <sub>16</sub> N <sub>2</sub> O <sub>2</sub>   |
| Molecular Weight: | 232.28  |
| Storage:          | Powder: -20°C for 3 years   In solvent: -80°C for 1 year<br>Actual storage temperature shall be subject to the COA. |



## Biological Description

|               |   |
|---------------|---|
| Description   | pirmagrel is a potent thromboxane synthase inhibitor. |
| Targets(IC50) | Prostaglandin Receptor,Thrombin                       |

## Solubility Information

|            |  |
|------------|--|
| Solubility | DMSO: 60 mg/mL (258.31 mM),Sonication is recommended.<br>(< 1 mg/ml refers to the product slightly soluble or insoluble) |
|------------|--|

## Preparing Stock Solutions

|       | 1mg       | 5mg        | 10mg       |
|-------|-----------|------------|------------|
| 1 mM  | 4.3051 mL | 21.5257 mL | 43.0515 mL |
| 5 mM  | 0.861 mL  | 4.3051 mL  | 8.6103 mL  |
| 10 mM | 0.4305 mL | 2.1526 mL  | 4.3051 mL  |
| 50 mM | 0.0861 mL | 0.4305 mL  | 0.861 mL   |

Please select the appropriate solvent to prepare the stock solution, according to the solubility of the product in different solvents. Please use it as soon as possible.

Note: The dilution table applies only to solid products. For liquid products, please calculate the stock solution based on the stated concentration and/or density.

## Reference

- Chouinard ML, et al. Pharmacokinetics and biochemical efficacy of pirmagrel, a thromboxane synthase inhibitor, in renal allograft recipients. Clin Pharmacol Ther. 1992 Dec;52(6):597-604.
- Rowe J, et al. Effects of hypoxia on regulation of prostanoid production in decidual endothelial cells in normal and preeclamptic pregnancy. J Soc Gynecol Investig. 2000 Mar-Apr;7(2):118-24.

**Inhibitor · Natural Compounds · Compound Libraries · Recombinant Proteins**

This product is for Research Use Only · Not for Human or Veterinary or Therapeutic Use

Tel:781-999-4286 E\_mail:info@targetmol.com Address:34 Washington Street,Wellesley Hills,MA 02481