

Valpromide

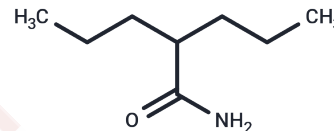
Chemical Properties

CAS No. : 2430-27-5

Formula: C₈H₁₇NO

Molecular Weight: 143.23

Storage: Store at low temperature, Keep away from direct sunlight
 Powder: -20°C for 3 years | In solvent: -80°C for 1 year
 Actual storage temperature shall be subject to the COA.



Biological Description

Description	Valpromide (Dipropylacetamide) is a carboxamide derivative of valproic acid, used in the treatment of epilepsy and some affective disorders.
Targets(IC50)	Epoxide Hydrolase, Antifection, HSV

Solubility Information

Solubility	DMSO: 50 mg/mL (349.09 mM), Sonication is recommended. (< 1 mg/ml refers to the product slightly soluble or insoluble)
In vivo Formulation	10% DMSO+40% PEG300+5% Tween 80+45% Saline: 2 mg/mL (13.96 mM), Sonication is recommended. <i>Please add the solvents sequentially, clarifying the solution as much as possible before adding the next one. Dissolve by heating and/or sonication if necessary. Working solution is recommended to be prepared and used immediately. The formulation provided above is for reference purposes only. In vivo formulations may vary and should be modified based on specific experimental conditions.</i>

Preparing Stock Solutions

	1mg	5mg	10mg
1 mM	6.9818 mL	34.9089 mL	69.8178 mL
5 mM	1.3964 mL	6.9818 mL	13.9636 mL
10 mM	0.6982 mL	3.4909 mL	6.9818 mL
50 mM	0.1396 mL	0.6982 mL	1.3964 mL

Please select the appropriate solvent to prepare the stock solution, according to the solubility of the product in different solvents. Please use it as soon as possible.

Note: The dilution table applies only to solid products. For liquid products, please calculate the stock solution based on the stated concentration and/or density.

Reference

Lemoine P, et al. Eur Psychiatry. 2000 Nov;15(7):424-32.

Inhibitor · Natural Compounds · Compound Libraries · Recombinant Proteins

This product is for Research Use Only · Not for Human or Veterinary or Therapeutic Use

Tel:781-999-4286 E_mail:info@targetmol.com Address:34 Washington Street,Wellesley Hills,MA 02481