

ABI-1968 PM

Chemical Properties

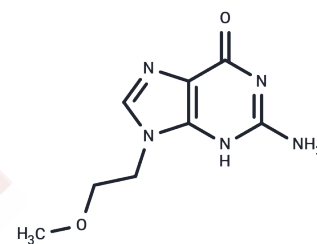
CAS No. : 1274711-50-0

Formula: C₈H₁₁N₅O₂

Molecular Weight: 209.21

Storage: Powder: -20°C for 3 years | In solvent: -80°C for 1 year

Actual storage temperature shall be subject to the COA.



Biological Description

Description	ABI-1968 PM is a derivative of ABI-1968, an apoptosis-stimulating agent and an inhibitor of viral replication. ABI-1968 can be used to study cervical intraepithelial neoplasia, papillomavirus infection, and squamous intraepithelial lesions.
Targets(IC50)	Others

Solubility Information

Solubility	DMSO: < 1 mg/mL (insoluble or slightly soluble) H ₂ O: < 1 mg/mL (insoluble or slightly soluble) (< 1 mg/ml refers to the product slightly soluble or insoluble)
------------	---

Preparing Stock Solutions

	1mg	5mg	10mg
1 mM	4.7799 mL	23.8994 mL	47.7989 mL
5 mM	0.956 mL	4.7799 mL	9.5598 mL
10 mM	0.478 mL	2.3899 mL	4.7799 mL
50 mM	0.0956 mL	0.478 mL	0.956 mL

Please select the appropriate solvent to prepare the stock solution, according to the solubility of the product in different solvents. Please use it as soon as possible.

Note: The dilution table applies only to solid products. For liquid products, please calculate the stock solution based on the stated concentration and/or density.

Reference

Blagg, et al. 2-Amino-6-oxopurine derivatives as GTP cyclohydrolase 1 inhibitors and their preparation, pharmaceutical compositions and use in the treatment of pain. WO2011035009 A1.

Inhibitor · Natural Compounds · Compound Libraries · Recombinant Proteins

This product is for Research Use Only · Not for Human or Veterinary or Therapeutic Use

Tel:781-999-4286 E_mail:info@targetmol.com Address:34 Washington Street,Wellesley Hills,MA 02481