

RXPA 380

Chemical Properties

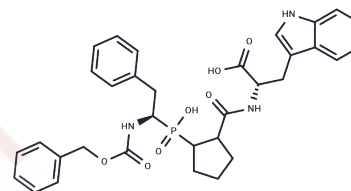
CAS No. : 564479-79-4

Formula: C33H36N3O7P

Molecular Weight: 617.63

Storage: Powder: -20°C for 3 years | In solvent: -80°C for 1 year

Actual storage temperature shall be subject to the COA.



Biological Description

Description	RXPA 380, a C-terminal specific angiotensin-converting enzyme (ACE) inhibitor, exhibits high affinity with a K_i of 3 nM. It effectively inhibits C-domain mutants of human recombinant ACE, demonstrating potent inhibition with an IC_{50} of 2.5 nM.
Targets(IC_{50})	Others, Angiotensin-converting Enzyme (ACE)

Preparing Stock Solutions

	1mg	5mg	10mg
1 mM	1.6191 mL	8.0955 mL	16.1909 mL
5 mM	0.3238 mL	1.6191 mL	3.2382 mL
10 mM	0.1619 mL	0.8095 mL	1.6191 mL
50 mM	0.0324 mL	0.1619 mL	0.3238 mL

Please select the appropriate solvent to prepare the stock solution, according to the solubility of the product in different solvents. Please use it as soon as possible.

Note: The dilution table applies only to solid products. For liquid products, please calculate the stock solution based on the stated concentration and/or density.

Inhibitor · Natural Compounds · Compound Libraries · Recombinant Proteins

This product is for Research Use Only · Not for Human or Veterinary or Therapeutic Use

Tel: 781-999-4286

E_mail: info@targetmol.com

Address: 34 Washington Street, Wellesley Hills, MA 02481