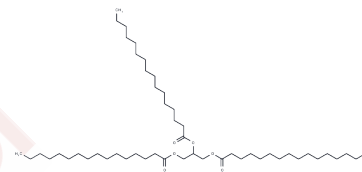


## Propane-1,2,3-triyl tripalmitate

## Chemical Properties

CAS No. :	555-44-2
Formula:	C51H98O6
Molecular Weight:	807.32
Storage:	Store at low temperature Powder: -20°C for 3 years   In solvent: -80°C for 1 year <small>Actual storage temperature shall be subject to the COA.</small>



## Biological Description

Description	Propane-1,2,3-triyl tripalmitate (Glycerol Tripalmitate) is a triacylglycerol found in dietary fats. In hamsters fed a diet enriched with it, Tripalmitin increases body weight, elevates plasma LDL levels, and reduces hepatic LDL receptor mRNA levels. It inhibits glucose-stimulated insulin secretion and decreases the viability of INS1 cells dose-dependently. Tripalmitin is used in cosmetic products for skin conditioning and as a thickening agent, and it forms lipid matrices of nanoparticles for drug delivery.
Targets(IC50)	Endogenous Metabolite, LDLR

## Solubility Information

Solubility	DMSO: < 1 mg/mL (insoluble or slightly soluble) 0.1M NaOH: < 1 mg/mL (insoluble or slightly soluble) Ethanol: < 1 mg/mL (insoluble or slightly soluble) (< 1 mg/ml refers to the product slightly soluble or insoluble)
------------	--

## Preparing Stock Solutions

	1mg	5mg	10mg
1 mM	1.2387 mL	6.1933 mL	12.3867 mL
5 mM	0.2477 mL	1.2387 mL	2.4773 mL
10 mM	0.1239 mL	0.6193 mL	1.2387 mL
50 mM	0.0248 mL	0.1239 mL	0.2477 mL

Please select the appropriate solvent to prepare the stock solution, according to the solubility of the product in different solvents. Please use it as soon as possible.

Note: The dilution table applies only to solid products. For liquid products, please calculate the stock solution based on the stated concentration and/or density.

Reference

Jeffcoat, R. et al.: Lipids, 12, 469 (1977)

Hudgins, L. et al.: J. Lipid Res., 41, 595 (2000)

**Inhibitor · Natural Compounds · Compound Libraries · Recombinant Proteins**

This product is for Research Use Only· Not for Human or Veterinary or Therapeutic Use

Tel:781-999-4286 E\_mail:info@targetmol.com Address:34 Washington Street,Wellesley Hills,MA 02481