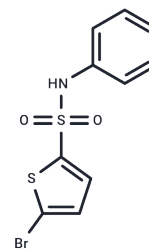


ES9-17

## Chemical Properties

CAS No. : 55854-43-8  
 Formula: C<sub>10</sub>H<sub>8</sub>BrNO<sub>2</sub>S<sub>2</sub>  
 Molecular Weight: 318.21  
 Storage: Powder: -20°C for 3 years | In solvent: -80°C for 1 year  
 Actual storage temperature shall be subject to the COA.



## Biological Description

Description	ES9-17, an analog of ES9 (endosidin9), is an inhibitor of clathrin-mediated endocytosis (CME). ES9-17 inhibits the uptake of FM4-64 and transferrin. ES9-17 inhibits root growth of Arabidopsis seedlings.
Targets(IC50)	Others,Dynamin
In vitro	ES9-17 (0-100 μM; 30 min) inhibits the absorption of the lipophilic styrene-based endocytosis tracer (FM4-64) with an EC <sub>50</sub> of 13 μM, does not deplete ATP in Arabidopsis cells at 30 μM for 30 min, reduces the uptake of transferrin in HeLa cells at 30 μM for 30 min [1], targets CHC, regulates the inner membrane transport pathway, and does not cause cytoplasmic acidification [2].

## Solubility Information

Solubility	DMSO: 125 mg/mL (392.82 mM),Sonication is recommended. (< 1 mg/ml refers to the product slightly soluble or insoluble)
------------	---

## Preparing Stock Solutions

	1mg	5mg	10mg
1 mM	3.1426 mL	15.7129 mL	31.4258 mL
5 mM	0.6285 mL	3.1426 mL	6.2852 mL
10 mM	0.3143 mL	1.5713 mL	3.1426 mL
50 mM	0.0629 mL	0.3143 mL	0.6285 mL

Please select the appropriate solvent to prepare the stock solution, according to the solubility of the product in different solvents. Please use it as soon as possible.

Note: The dilution table applies only to solid products. For liquid products, please calculate the stock solution based on the stated concentration and/or density.

Reference

Dejonghe W, et al. Disruption of endocytosis through chemical inhibition of clathrin heavy chain function. Nat Chem Biol. 2019 Jun;15(6):641-649.

Huang L, et al. Progress in using chemical biology as a tool to uncover novel regulators of plant endomembrane trafficking. Curr Opin Plant Biol. 2019 Dec;52:106-113.

**Inhibitor · Natural Compounds · Compound Libraries · Recombinant Proteins**

This product is for Research Use Only · Not for Human or Veterinary or Therapeutic Use

Tel:781-999-4286 E\_mail:info@targetmol.com Address:34 Washington Street,Wellesley Hills,MA 02481