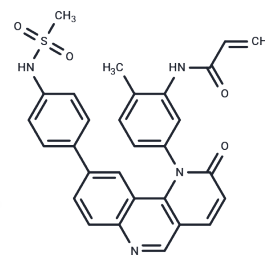


BMX-IN-1

Chemical Properties

| | |
|-------------------|---|
| CAS No. : | 1431525-23-3 |
| Formula: | C ₂₉ H ₂₄ N ₄ O ₅ |
| Molecular Weight: | 524.59 |
| Storage: | Powder: -20°C for 3 years In solvent: -80°C for 1 year Actual storage temperature shall be subject to the COA. |



Biological Description

| | |
|----------------------------|---|
| Description | BMX-IN-1 (BMX kinase inhibitor) is a selective inhibitor of bone marrow tyrosine kinase on chromosome X (BMX, IC ₅₀ = 8 nM) and the related Bruton's tyrosine kinase (BTK, IC ₅₀ = 10.4 nM), but BMX-IN-1 is more than 47-656 fold less potent against Blk, JAK3, EGFR, Itk, or Tec activity. |
| Targets(IC ₅₀) | BTK |
| In vitro | BMX-IN-1 inhibits only wild-type BMX with an IC ₅₀ of 138 nM. BMX-IN-1 inhibits the proliferation of Tel-BMX-transformed Ba/F3 cells and RV-1 cells with IC ₅₀ s of 25 nM and 2.53 μM. BMX-IN-1 exhibits remarkable selectivity with an S(10) score of 0.01[1]. |

Solubility Information

| | |
|------------|--|
| Solubility | DMF: 9 mg/mL (17.16 mM), Sonication is recommended. DMSO: 8 mg/mL (15.25 mM), Sonication is recommended. (< 1 mg/ml refers to the product slightly soluble or insoluble) |
|------------|--|

Preparing Stock Solutions

| | 1mg | 5mg | 10mg |
|-------|-----------|-----------|------------|
| 1 mM | 1.9063 mL | 9.5313 mL | 19.0625 mL |
| 5 mM | 0.3813 mL | 1.9063 mL | 3.8125 mL |
| 10 mM | 0.1906 mL | 0.9531 mL | 1.9063 mL |
| 50 mM | 0.0381 mL | 0.1906 mL | 0.3813 mL |

Please select the appropriate solvent to prepare the stock solution, according to the solubility of the product in different solvents. Please use it as soon as possible.

Note: The dilution table applies only to solid products. For liquid products, please calculate the stock solution based on the stated concentration and/or density.

Reference

Feiyang Liu, et al. Discovery of a Selective Irreversible BMX Inhibitor for Prostate Cancer. ACS Chem. Biol.

Inhibitor · Natural Compounds · Compound Libraries · Recombinant Proteins

This product is for Research Use Only · Not for Human or Veterinary or Therapeutic Use

Tel:781-999-4286 E_mail:info@targetmol.com Address:34 Washington Street,Wellesley Hills,MA 02481