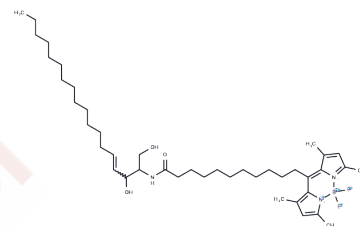


BODIPY-C12 Ceramide (d18:1/12:0)

Chemical Properties

CAS No. :	1246355-58-7
Formula:	C42H70BF2N3O3
Molecular Weight:	713.85
Storage:	Powder: -20°C for 3 years In solvent: -80°C for 1 year Actual storage temperature shall be subject to the COA.



Biological Description

Description	BODIPY-C12 Ceramide (B12Cer) is a fluorescently-tagged form of C12 ceramide, with excitation/emission maxima at 505/540 nm, respectively. It is a fluorescently-labeled sphingolipid and has been utilized for quantifying acid sphingomyelinase activity in the plasma of patients with Niemann-Pick disease.
Targets(IC50)	Others, Drug Metabolite

Solubility Information

Solubility	Methanol: Slightly soluble Chloroform: Slightly soluble (< 1 mg/ml refers to the product slightly soluble or insoluble)
------------	--

Preparing Stock Solutions

	1mg	5mg	10mg
1 mM	1.4009 mL	7.0043 mL	14.0085 mL
5 mM	0.2802 mL	1.4009 mL	2.8017 mL
10 mM	0.1401 mL	0.7004 mL	1.4009 mL
50 mM	0.028 mL	0.1401 mL	0.2802 mL

Please select the appropriate solvent to prepare the stock solution, according to the solubility of the product in different solvents. Please use it as soon as possible.

Note: The dilution table applies only to solid products. For liquid products, please calculate the stock solution based on the stated concentration and/or density.

Inhibitor · Natural Compounds · Compound Libraries · Recombinant Proteins

This product is for Research Use Only · Not for Human or Veterinary or Therapeutic Use

Tel: 781-999-4286 E_mail: info@targetmol.com Address: 34 Washington Street, Wellesley Hills, MA 02481