

C-telopeptide acetate

Chemical Properties

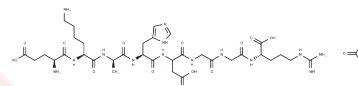
CAS No. :

Formula: C36H60N14O15

Molecular Weight: 928.95

Storage: Store at low temperature, Keep away from moisture
Powder: -20°C for 3 years | In solvent: -80°C for 1 year

Actual storage temperature shall be subject to the COA.



Biological Description

Description	C-telopeptide acetate is a cross-linked peptide of type I collagen and can be used as a marker for bone resorption.
Targets(IC50)	Others
In vitro	C-telopeptide acetate is released during bone resorption and has been correlated with bone mineral density[1].

Preparing Stock Solutions

	1mg	5mg	10mg
1 mM	1.0765 mL	5.3824 mL	10.7648 mL
5 mM	0.2153 mL	1.0765 mL	2.153 mL
10 mM	0.1076 mL	0.5382 mL	1.0765 mL
50 mM	0.0215 mL	0.1076 mL	0.2153 mL

Please select the appropriate solvent to prepare the stock solution, according to the solubility of the product in different solvents. Please use it as soon as possible.

Note: The dilution table applies only to solid products. For liquid products, please calculate the stock solution based on the stated concentration and/or density.

Reference

Enciso R, et al. Assessing the utility of serum C-telopeptide cross-link of type 1 collagen as a predictor of bisphosphonate-related osteonecrosis of the jaw: A systematic review and meta-analysis. J Am Dent Assoc. 2016 Jul;147(7):551-560.e11.

Inhibitor · Natural Compounds · Compound Libraries · Recombinant Proteins

This product is for Research Use Only · Not for Human or Veterinary or Therapeutic Use

Tel:781-999-4286 E_mail:info@targetmol.com Address:34 Washington Street,Wellesley Hills,MA 02481