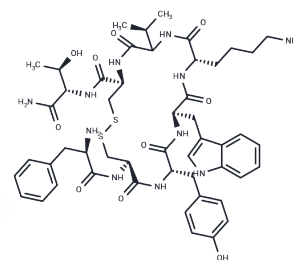


RC 121

Chemical Properties

CAS No. : 99660-13-6
 Formula: C₅₀H₆₇N₁₁O₁₀S₂
 Molecular Weight: 1046.27
 Storage: Powder: -20°C for 3 years | In solvent: -80°C for 1 year
 Actual storage temperature shall be subject to the COA.



Biological Description

Description	RC 121 is a highly potent somatostatin (SRIF) analog.
Targets(IC50)	Others

Preparing Stock Solutions

	1mg	5mg	10mg
1 mM	0.9558 mL	4.7789 mL	9.5578 mL
5 mM	0.1912 mL	0.9558 mL	1.9116 mL
10 mM	0.0956 mL	0.4779 mL	0.9558 mL
50 mM	0.0191 mL	0.0956 mL	0.1912 mL

Please select the appropriate solvent to prepare the stock solution, according to the solubility of the product in different solvents. Please use it as soon as possible.

Note: The dilution table applies only to solid products. For liquid products, please calculate the stock solution based on the stated concentration and/or density.

Reference

Karashima T, Cai RZ, Schally AV. Effects of highly potent octapeptide analogs of somatostatin on growth hormone, insulin and glucagon release. *Life Sci.* 1987 Aug 24;41(8):1011-9. Erratum in: *Life Sci* 1987 Sep 28;41(13):1665. PubMed PMID: 2886886.

László F, Pávó I, Penke B, Bálint GA. Protective effect of an orally administered, highly potent somatostatin analog (RC-121) against absolute ethanol-induced hemorrhagic erosions of the rat gastric mucosa. *Life Sci.* 1989;44(21):1573-8. PubMed PMID: 2733541.

Schally AV, Redding TW. Somatostatin analogs as adjuncts to agonists of luteinizing hormone-releasing hormone in the treatment of experimental prostate cancer. *Proc Natl Acad Sci U S A.* 1987 Oct;84(20):7275-9. PubMed PMID: 2890164; PubMed Central PMCID: PMC299275.

Banks WA, Schally AV, Barrera CM, Fasold MB, Durham DA, Csernus VJ, Groot K, Kastin AJ. Permeability of the murine blood-brain barrier to some octapeptide analogs of somatostatin. *Proc Natl Acad Sci U S A.* 1990 Sep;87(17):6762-6. PubMed PMID: 1975697; PubMed Central PMCID: PMC54617.

Inhibitor · Natural Compounds · Compound Libraries · Recombinant Proteins

This product is for Research Use Only · Not for Human or Veterinary or Therapeutic Use

Tel:781-999-4286 E_mail:info@targetmol.com Address:34 Washington Street,Wellesley Hills,MA 02481