

JY-1-106

Chemical Properties

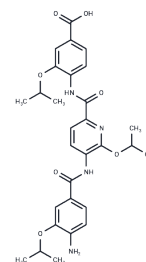
CAS No. :

Formula: C₂₉H₃₄N₄O₇

Molecular Weight: 550.61

Storage: Powder: -20°C for 3 years | In solvent: -80°C for 1 year

Actual storage temperature shall be subject to the COA.



Biological Description

Description	JY-1-106 is a BH3 α -helix mimetic, inducing apoptosis in a subset of cancer cells (lung cancer, colon cancer and mesothelioma) by disrupting Bcl-xL and Mcl-1 protein-protein interactions with Bak.
Targets(IC50)	Others

Preparing Stock Solutions

	1mg	5mg	10mg
1 mM	1.8162 mL	9.0808 mL	18.1617 mL
5 mM	0.3632 mL	1.8162 mL	3.6323 mL
10 mM	0.1816 mL	0.9081 mL	1.8162 mL
50 mM	0.0363 mL	0.1816 mL	0.3632 mL

Please select the appropriate solvent to prepare the stock solution, according to the solubility of the product in different solvents. Please use it as soon as possible.

Note: The dilution table applies only to solid products. For liquid products, please calculate the stock solution based on the stated concentration and/or density.

Reference

- Perri M, Yap JL, Fletcher S, Cione E, Kane MA. Therapeutic potential of Bcl-x(L)/Mcl-1 synthetic inhibitor JY-1-106 and retinoids for human triple-negative breast cancer treatment. *Oncol Lett.* 2018 May;15(5):7231-7236. doi: 10.3892/ol.2018.8258. Epub 2018 Mar 14. PubMed PMID: 29849791; PubMed Central PMCID: PMC5962833.
- Drennen B, Scheenstra JA, Yap JL, Chen L, Lanning ME, Roth BM, Wilder PT, Fletcher S. Structural Re-engineering of the α -Helix Mimetic JY-1-106 into Small Molecules: Disruption of the Mcl-1-Bak-BH3 Protein-Protein Interaction with 2,6-Di-Substituted Nicotinates. *ChemMedChem.* 2016 Apr 19;11(8):827-33. doi: 10.1002/cmdc.201500461. Epub 2016 Feb 4. PubMed PMID: 26844930; PubMed Central PMCID: PMC4838500.
- Perri M, Yap JL, Yu J, Cione E, Fletcher S, Kane MA. BCL-xL/MCL-1 inhibition and RAR γ antagonism work cooperatively in human HL60 leukemia cells. *Exp Cell Res.* 2014 Oct 1;327(2):183-91. doi: 10.1016/j.yexcr.2014.07.024. Epub 2014 Aug 1. PubMed PMID: 25088254; PubMed Central PMCID: PMC4727751.
- Cao X, Yap JL, Newell-Rogers MK, Peddaboina C, Jiang W, Papaconstantinou HT, Jupitor D, Rai A, Jung KY, Tubin RP, Yu W, Vanommeslaeghe K, Wilder PT, MacKerell AD Jr, Fletcher S, Smythe RW. The novel BH3 α -helix mimetic JY-1-106 induces apoptosis in a subset of cancer cells (lung cancer, colon cancer and mesothelioma) by disrupting Bcl-xL and Mcl-1 protein-protein interactions with Bak. *Mol Cancer.* 2013 May 16;12(1):42. doi: 10.1186/1476-4598-12-42. PubMed PMID: 23680104; PubMed Central PMCID: PMC3663763.

Inhibitor · Natural Compounds · Compound Libraries · Recombinant Proteins

This product is for Research Use Only · Not for Human or Veterinary or Therapeutic Use

Tel:781-999-4286 E_mail:info@targetmol.com Address:34 Washington Street,Wellesley Hills,MA 02481