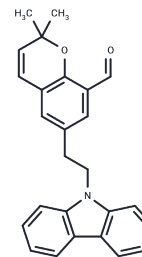


BJE6-106

Chemical Properties

CAS No. :	1564249-38-2
Formula:	C ₂₆ H ₂₃ NO ₂
Molecular Weight:	381.47
Storage:	Store at low temperature Powder: -20°C for 3 years In solvent: -80°C for 1 year <small>Actual storage temperature shall be subject to the COA.</small>



Biological Description

Description	BJE6-106 (B106) is a selective PKC δ inhibitor (IC ₅₀ = 0.05 μ M) with 1000-fold higher selectivity for PKC δ than PKC α (IC ₅₀ = 50 μ M). BJE6-106 induces caspase-dependent apoptosis, activates the JNK pathway and H2AX, and can be used to study NRAS-mutated melanoma.
Targets(IC50)	Apoptosis,Caspase,JNK,PKC
In vitro	BJE6-106 (0.2/0.5 μ M; 6-24 hours) induces caspase-dependent apoptosis in SBcl2 cells, enhancing caspase 3/7 activity [1]. BJE6-106 (0.2/0.5 μ M; 24-72 hours) inhibits survival of melanoma cell lines harboring NRAS mutations [1]. BJE6-106 (0.5 μ M; 2-10 hours) induces JNK, MKK4, and H2AX activation in SBcl2 cells, activating the MKK4-JNK-H2AX pathway [1].

Solubility Information

Solubility	DMSO: 40 mg/mL (104.86 mM),Sonication is recommended. (< 1 mg/ml refers to the product slightly soluble or insoluble)
------------	--

Preparing Stock Solutions

	1mg	5mg	10mg
1 mM	2.6214 mL	13.1072 mL	26.2144 mL
5 mM	0.5243 mL	2.6214 mL	5.2429 mL
10 mM	0.2621 mL	1.3107 mL	2.6214 mL
50 mM	0.0524 mL	0.2621 mL	0.5243 mL

Please select the appropriate solvent to prepare the stock solution, according to the solubility of the product in different solvents. Please use it as soon as possible.

Note: The dilution table applies only to solid products. For liquid products, please calculate the stock solution based on the stated concentration and/or density.

Reference

Takashima A, et al. Protein kinase C δ is a therapeutic target in malignant melanoma with NRAS mutation. ACS Chem Biol. 2014;9(4):1003-1014.

Inhibitor · Natural Compounds · Compound Libraries · Recombinant Proteins

This product is for Research Use Only · Not for Human or Veterinary or Therapeutic Use

Tel:781-999-4286 E_mail:info@targetmol.com Address:34 Washington Street,Wellesley Hills,MA 02481