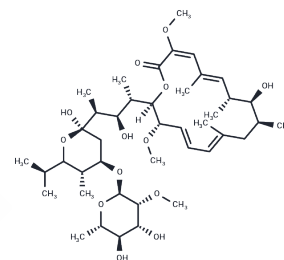


## Leucanicidin

## Chemical Properties

CAS No. :	91021-66-8
Formula:	C42H70O13
Molecular Weight:	783.009
Storage:	Powder: -20°C for 3 years   In solvent: -80°C for 1 year Actual storage temperature shall be subject to the COA.



## Biological Description

Description	Leucanicidin is a macrolide bacterial metabolite originally isolated from <i>S. halstedii</i> . It is toxic to <i>L. separata</i> fourth instar larvae at a concentration of 20 ppm and to <i>H. contortus</i> , <i>T. colubriformis</i> , and <i>O. circumcincta</i> larvae (LD50s = 0.23-0.42 µg/ml).
Targets(IC50)	Others,Antibacterial

## Preparing Stock Solutions

	1mg	5mg	10mg
1 mM	1.2771 mL	6.3856 mL	12.7712 mL
5 mM	0.2554 mL	1.2771 mL	2.5542 mL
10 mM	0.1277 mL	0.6386 mL	1.2771 mL
50 mM	0.0255 mL	0.1277 mL	0.2554 mL

Please select the appropriate solvent to prepare the stock solution, according to the solubility of the product in different solvents. Please use it as soon as possible.

Note: The dilution table applies only to solid products. For liquid products, please calculate the stock solution based on the stated concentration and/or density.

## Reference

- Wu C, Medema MH, Läkamp RM, Zhang L, Dorrestein PC, Choi YH, van Wezel GP. Leucanicidin and Endophenazines Result from Methyl-Rhamnosylation by the Same Tailoring Enzymes in *Kitasatospora* sp. MBT66. *ACS Chem Biol*. 2016 Feb 19;11(2):478-90. doi: 10.1021/acscchembio.5b00801. Epub 2015 Dec 24. PubMed PMID: 26675041.
- Lacey E, Gill JH, Power ML, Rickards RW, O'Shea MG, Rothschild JM. Bafilolides, potent inhibitors of the motility and development of the free-living stages of parasitic nematodes. *Int J Parasitol*. 1995 Mar;25(3):349-57. PubMed PMID: 7601593.
- O'Shea MG, Rickards RW, Rothschild JM, Lacey E. Absolute configurations of macrolide antibiotics of the bafilomycin and leucanicidin groups. *J Antibiot (Tokyo)*. 1997 Dec;50(12):1073-7. PubMed PMID: 9510919.

**Inhibitor · Natural Compounds · Compound Libraries · Recombinant Proteins**

This product is for Research Use Only · Not for Human or Veterinary or Therapeutic Use

Tel:781-999-4286 E\_mail:info@targetmol.com Address:34 Washington Street,Wellesley Hills,MA 02481