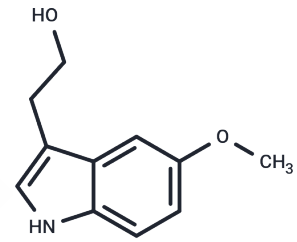


5-Methoxytryptophol

Chemical Properties

CAS No. :	712-09-4
Formula:	C ₁₁ H ₁₃ NO ₂
Molecular Weight:	191.23
Storage:	Pure form: -20°C for 3 years In solvent: -80°C for 1 year

Actual storage temperature shall be subject to the COA.



Biological Description

Description	5-Methoxytryptophol (2-(5-Methoxy-1H-indol-3-yl)ethanol) is a pineal indoleamine derived from serotonin shown to be biologically active in a number of species.
Targets(IC ₅₀)	Endogenous Metabolite
In vitro	In MC3T3-E1 cells, most of the 5-methoxytryptophol doses reduced slightly the metabolic activity of osteoblasts. After 14 days of cell culture, Rankl mRNA levels were decreased. 5-methoxytryptophol also induced a high osteocalcin secretion and mineralization capacity. In RAW264.7 cells, 5-methoxytryptophol decreased the number of osteoclast formed and its activity. 5-methoxytryptophol promoted activation of the ERK1/2 pathway through the phosphorylation of ERK, while LUZ addition suppressed this effect. In conclusion, 5-methoxytryptophol inhibits osteoclastogenesis and promoting osteoblast differentiation[3].

Solubility Information

Solubility	DMSO: 88 mg/mL (460.18 mM), Sonication is recommended. (< 1 mg/ml refers to the product slightly soluble or insoluble)
In vivo Formulation	10% DMSO+40% PEG300+5% Tween 80+45% Saline: 3.3 mg/mL (17.26 mM), Sonication is recommended. <i>Please add the solvents sequentially, clarifying the solution as much as possible before adding the next one. Dissolve by heating and/or sonication if necessary. Working solution is recommended to be prepared and used immediately. The formulation provided above is for reference purposes only. In vivo formulations may vary and should be modified based on specific experimental conditions.</i>

Preparing Stock Solutions

	1mg	5mg	10mg
1 mM	5.2293 mL	26.1465 mL	52.2931 mL
5 mM	1.0459 mL	5.2293 mL	10.4586 mL
10 mM	0.5229 mL	2.6147 mL	5.2293 mL
50 mM	0.1046 mL	0.5229 mL	1.0459 mL

Please select the appropriate solvent to prepare the stock solution, according to the solubility of the product in different solvents. Please use it as soon as possible.

Note: The dilution table applies only to solid products. For liquid products, please calculate the stock solution based on the stated concentration and/or density.

Reference

Ouzir M, Bouhaddou N, Khalki H, Lakhdar-Ghazal N. Physiological and pharmacological properties of 5-methoxytryptophol. *Expert Rev Endocrinol Metab.* 2013 Jul;8(4):355-364.

Raynaud F, et al. Plasma concentrations of 5-methoxytryptamine, 5-methoxytryptophol and melatonin after 5-methoxytryptamine administration of golden hamsters: physiological implications. *J Neural Transm Gen Sect.* 1991;84(1-2):33-43.

Inhibitor · Natural Compounds · Compound Libraries · Recombinant Proteins

This product is for Research Use Only · Not for Human or Veterinary or Therapeutic Use

Tel:781-999-4286 E_mail:info@targetmol.com Address:34 Washington Street,Wellesley Hills,MA 02481