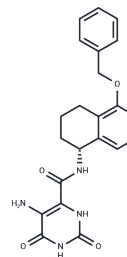


Endothelial lipase inhibitor-1

Chemical Properties

CAS No. :	1466427-02-0
Formula:	C ₂₂ H ₂₂ N ₄ O ₄
Molecular Weight:	406.43
Storage:	Powder: -20°C for 3 years In solvent: -80°C for 1 year Actual storage temperature shall be subject to the COA.



Biological Description

Description	Endothelial lipase inhibitor-1 is a potent inhibitor of endothelial lipase with an IC ₅₀ of 49 nM.
Targets(IC ₅₀)	Others,Lipase

Solubility Information

Solubility	DMSO: 25 mg/mL (61.51 mM),Sonication is recommended. (< 1 mg/ml refers to the product slightly soluble or insoluble)
In vivo Formulation	10% DMSO+40% PEG300+5% Tween 80+45% Saline: 2.5 mg/mL (6.15 mM),Solution. 10% DMSO+90% Saline: < 2.5 mg/mL (6.15 mM),Lower concentrations may be soluble, but exact solubility limit is unknown. <i>Please add the solvents sequentially, clarifying the solution as much as possible before adding the next one. Dissolve by heating and/or sonication if necessary. Working solution is recommended to be prepared and used immediately. The formulation provided above is for reference purposes only. In vivo formulations may vary and should be modified based on specific experimental conditions.</i>

Preparing Stock Solutions

	1mg	5mg	10mg
1 mM	2.4604 mL	12.3022 mL	24.6045 mL
5 mM	0.4921 mL	2.4604 mL	4.9209 mL
10 mM	0.246 mL	1.2302 mL	2.4604 mL
50 mM	0.0492 mL	0.246 mL	0.4921 mL

Please select the appropriate solvent to prepare the stock solution, according to the solubility of the product in different solvents. Please use it as soon as possible.

Note: The dilution table applies only to solid products. For liquid products, please calculate the stock solution based on the stated concentration and/or density.

Reference

Hu CH, et al. Discovery and synthesis of tetrahydropyrimidinedione-4-carboxamides as endothelial lipase inhibitors. *Bioorg Med Chem Lett*. 2018 Dec 15;28(23-24):3721-3725.

Inhibitor · Natural Compounds · Compound Libraries · Recombinant Proteins

This product is for Research Use Only · Not for Human or Veterinary or Therapeutic Use

Tel:781-999-4286 E_mail:info@targetmol.com Address:34 Washington Street,Wellesley Hills,MA 02481