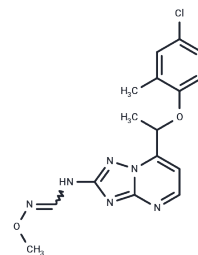


CM-TPMF

Chemical Properties

CAS No. :	477865-59-1
Formula:	C ₁₆ H ₁₇ ClN ₆ O ₂
Molecular Weight:	360.8
Storage:	Powder: -20°C for 3 years In solvent: -80°C for 1 year Actual storage temperature shall be subject to the COA.



Biological Description

Description	CM-TPMF is a highly efficient and potent activator of the K(Ca) _{2.1} channel, with an EC ₅₀ value of 24 nM for (-)-CM-TPMF, which exerts its activating effect through Ser293 in the transmembrane segment 5, and can be used for research into related neurological disorders.
Targets(IC ₅₀)	Potassium Channel

Preparing Stock Solutions

	1mg	5mg	10mg
1 mM	2.7716 mL	13.8581 mL	27.7162 mL
5 mM	0.5543 mL	2.7716 mL	5.5432 mL
10 mM	0.2772 mL	1.3858 mL	2.7716 mL
50 mM	0.0554 mL	0.2772 mL	0.5543 mL

Please select the appropriate solvent to prepare the stock solution, according to the solubility of the product in different solvents. Please use it as soon as possible.

Note: The dilution table applies only to solid products. For liquid products, please calculate the stock solution based on the stated concentration and/or density.

Reference

Hougaard C, et al. Evidence for a common pharmacological interaction site on K(Ca)₂ channels providing both selective activation and selective inhibition of the human K(Ca)_{2.1} subtype. Mol Pharmacol. 2012 Feb;81(2):210-9.

Inhibitor · Natural Compounds · Compound Libraries · Recombinant Proteins

This product is for Research Use Only · Not for Human or Veterinary or Therapeutic Use

Tel: 781-999-4286 E_mail: info@targetmol.com Address: 34 Washington Street, Wellesley Hills, MA 02481