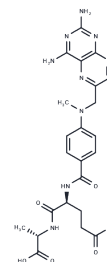


## Methotrexate-alpha-alanine

## Chemical Properties

CAS No. :	116819-28-4
Formula:	C <sub>23</sub> H <sub>27</sub> N <sub>9</sub> O <sub>6</sub>
Molecular Weight:	525.52
Storage:	Powder: -20°C for 3 years   In solvent: -80°C for 1 year Actual storage temperature shall be subject to the COA.



## Biological Description

Description	Methotrexate-alpha-alanine is a prodrug.
Targets(IC50)	Others

## Preparing Stock Solutions

	1mg	5mg	10mg
1 mM	1.9029 mL	9.5144 mL	19.0288 mL
5 mM	0.3806 mL	1.9029 mL	3.8058 mL
10 mM	0.1903 mL	0.9514 mL	1.9029 mL
50 mM	0.0381 mL	0.1903 mL	0.3806 mL

Please select the appropriate solvent to prepare the stock solution, according to the solubility of the product in different solvents. Please use it as soon as possible.

Note: The dilution table applies only to solid products. For liquid products, please calculate the stock solution based on the stated concentration and/or density.

## Reference

- Huennekens FM. Development of methotrexate alpha-peptides as prodrugs for activation by enzyme-monoclonal antibody conjugates. *Adv Enzyme Regul.* 1997;37:77-92. PubMed PMID: 9381987.
- Vitols KS, Haag-Zeino B, Baer T, Montejano YD, Huennekens FM. Methotrexate-alpha-phenylalanine: optimization of methotrexate prodrug for activation by carboxypeptidase A-monoclonal antibody conjugate. *Cancer Res.* 1995 Feb 1;55(3):478-81. PubMed PMID: 7834611.
- Haenseler E, Esswein A, Vitols KS, Montejano Y, Mueller BM, Reisfeld RA, Huennekens FM. Activation of methotrexate-alpha-alanine by carboxypeptidase A-monoclonal antibody conjugate. *Biochemistry.* 1992 Jan 28; 31(3):891-7. PubMed PMID: 1731945.
- Esswein A, Hänseler E, Montejano Y, Vitols KS, Huennekens FM. Construction and chemotherapeutic potential of carboxypeptidase-A/monoclonal antibody conjugate. *Adv Enzyme Regul.* 1991;31:3-12. Review. PubMed PMID: 1877392.

**Inhibitor · Natural Compounds · Compound Libraries · Recombinant Proteins**

This product is for Research Use Only · Not for Human or Veterinary or Therapeutic Use

Tel:781-999-4286 E\_mail:info@targetmol.com Address:34 Washington Street,Wellesley Hills,MA 02481