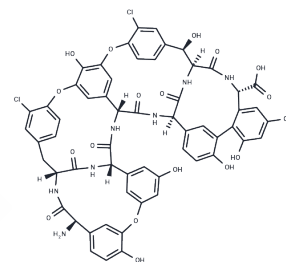


Teicoplanin aglycone

Chemical Properties

CAS No. :	89139-42-4
Formula:	C ₅₈ H ₄₅ Cl ₂ N ₇ O ₁₈
Molecular Weight:	1198.93
Storage:	Powder: -20°C for 3 years In solvent: -80°C for 1 year Actual storage temperature shall be subject to the COA.



Biological Description

Description	Teicoplanin aglycone is an antibacterial glycopeptide antibiotic used in the prophylaxis and treatment of serious infections caused by Gram-positive bacteria, including Enterococcus faecalis and methicillin-resistant Staphylococcus aureus.
Targets(IC50)	Others

Preparing Stock Solutions

	1mg	5mg	10mg
1 mM	0.8341 mL	4.1704 mL	8.3408 mL
5 mM	0.1668 mL	0.8341 mL	1.6682 mL
10 mM	0.0834 mL	0.417 mL	0.8341 mL
50 mM	0.0167 mL	0.0834 mL	0.1668 mL

Please select the appropriate solvent to prepare the stock solution, according to the solubility of the product in different solvents. Please use it as soon as possible.

Note: The dilution table applies only to solid products. For liquid products, please calculate the stock solution based on the stated concentration and/or density.

Reference

- Gonnella NC, Grinberg N, Mcloughlin M, Choudhary O, Fandrick K, Ma S. Three-dimensional structure of cyclic antibiotic teicoplanin aglycone using NMR distance and dihedral angle restraints in a DMSO solvation model. *Magn Reson Chem*. 2015 Oct;53(10):829-35. doi: 10.1002/mrc.4279. Epub 2015 Jul 1. PubMed PMID: 26138046.
- Bick MJ, Banik JJ, Darst SA, Brady SF. Crystal structures of the glycopeptide sulfotransferase Teg12 in a complex with the teicoplanin aglycone. *Biochemistry*. 2010 May 18;49(19):4159-68. doi: 10.1021/bi100150v. PubMed PMID: 20361791; PubMed Central PMCID: PMC2888265.
- Tollas S, Bereczki I, Sipos A, Róth E, Batta G, Daróczy L, Kéki S, Ostorházi E, Rozgonyi F, Herczegh P. Nano-sized clusters of a teicoplanin ψ -aglycon-fullerene conjugate. Synthesis, antibacterial activity and aggregation studies. *Eur J Med Chem*. 2012 Aug;54:943-8. doi: 10.1016/j.ejmech.2012.06.054. Epub 2012 Jul 4. PubMed PMID: 22795664.
- Ravichandran S, Collins JR, Singh N, W Wainer I. A molecular model of the enantioselective liquid chromatographic separation of (R,S)-ifosfamide and its N-dechloroethylated metabolites on a teicoplanin aglycon chiral stationary phase. *J Chromatogr A*. 2012 Dec 21;1269:218-25. doi: 10.1016/j.chroma.2012.08.019. Epub 2012 Aug 10. PubMed PMID: 22917979; PubMed Central PMCID: PMC3513553.

Inhibitor · Natural Compounds · Compound Libraries · Recombinant Proteins

This product is for Research Use Only · Not for Human or Veterinary or Therapeutic Use

Tel:781-999-4286 E_mail:info@targetmol.com Address:34 Washington Street,Wellesley Hills,MA 02481