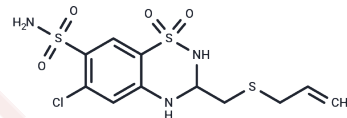


Altizide

Chemical Properties

CAS No. :	5588-16-9
Formula:	C ₁₁ H ₁₄ ClN ₃ O ₄ S ₃
Molecular Weight:	383.89
Storage:	Powder: -20°C for 3 years In solvent: -80°C for 1 year Actual storage temperature shall be subject to the COA.



Biological Description

Description	Altizide is a thiazide diuretic. It is used to treat oedema and hypertension.
Targets(IC50)	Others

Solubility Information

Solubility	DMSO: Soluble, (< 1 mg/ml refers to the product slightly soluble or insoluble)
------------	---

Preparing Stock Solutions

	1mg	5mg	10mg
1 mM	2.6049 mL	13.0246 mL	26.0491 mL
5 mM	0.521 mL	2.6049 mL	5.2098 mL
10 mM	0.2605 mL	1.3025 mL	2.6049 mL
50 mM	0.0521 mL	0.2605 mL	0.521 mL

Please select the appropriate solvent to prepare the stock solution, according to the solubility of the product in different solvents. Please use it as soon as possible.

Note: The dilution table applies only to solid products. For liquid products, please calculate the stock solution based on the stated concentration and/or density.

Reference

- Deventer K, Pozo OJ, Van Eenoo P, Delbeke FT. Detection of urinary markers for thiazide diuretics after oral administration of hydrochlorothiazide and altizide-relevance to doping control analysis. *J Chromatogr A*. 2009 Mar 20;1216(12):2466-73. doi: 10.1016/j.chroma.2009.01.032. PubMed PMID: 19187939.
- Degre S, Detry JM, Unger P, Cosyns J, Brohet C, Kormoss N. Effects of spironolactone-altizide on left ventricular hypertrophy. *Acta Cardiol*. 1998;53(5):261-7. PubMed PMID: 9922803.
- Charneau J, Mendler M. [Acute necrotic pancreatitis and althiazide]. *Gastroenterol Clin Biol*. 1997;21(2):164-5. French. PubMed PMID: 9161489.
- Poncelet P, Wehrten M, Pelletier B, Capron MH. Spironolactone and altizide used in combination with enalapril: twenty-four-hour ambulatory recording of blood pressure. *Am J Cardiol*. 1990 Jun 19;65(23):33K-35K. PubMed PMID: 2191587.

Inhibitor · Natural Compounds · Compound Libraries · Recombinant Proteins

This product is for Research Use Only · Not for Human or Veterinary or Therapeutic Use

Tel:781-999-4286 E_mail:info@targetmol.com Address:34 Washington Street,Wellesley Hills,MA 02481