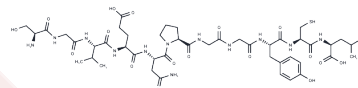


Glycoprotein (276-286)

Chemical Properties

CAS No. :	160543-97-5
Formula:	C ₄₆ H ₇₀ N ₁₂ O ₁₇ S
Molecular Weight:	1095.18
Storage:	Keep away from moisture Powder: -20°C for 3 years In solvent: -80°C for 1 year <small>Actual storage temperature shall be subject to the COA.</small>



Biological Description

Description	Known Db-restricted peptide of lymphocytic choriomeningitis virus (LCMV).
Targets(IC50)	Anti-infection, Virus Protease

Preparing Stock Solutions

	1mg	5mg	10mg
1 mM	0.9131 mL	4.5655 mL	9.1309 mL
5 mM	0.1826 mL	0.9131 mL	1.8262 mL
10 mM	0.0913 mL	0.4565 mL	0.9131 mL
50 mM	0.0183 mL	0.0913 mL	0.1826 mL

Please select the appropriate solvent to prepare the stock solution, according to the solubility of the product in different solvents. Please use it as soon as possible.

Note: The dilution table applies only to solid products. For liquid products, please calculate the stock solution based on the stated concentration and/or density.

Reference

Oldstone MB, et al. Discriminated selection among viral peptides with the appropriate anchor residues: implications for the size of the cytotoxic T-lymphocyte repertoire and control of viral infection. J Virol. 1995 Dec;69 (12):7423-9.

Inhibitor · Natural Compounds · Compound Libraries · Recombinant Proteins

This product is for Research Use Only · Not for Human or Veterinary or Therapeutic Use

Tel: 781-999-4286 E_mail: info@targetmol.com Address: 34 Washington Street, Wellesley Hills, MA 02481