

Sapelin A

Chemical Properties

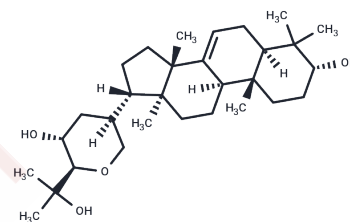
CAS No. : 26790-93-2

Formula: C₃₀H₅₀O₄

Molecular Weight: 474.726

Storage: Powder: -20°C for 3 years | In solvent: -80°C for 1 year

Actual storage temperature shall be subject to the COA.



Biological Description

Description	Sapelin A is a terpenoid.
Targets(IC50)	Others

Preparing Stock Solutions

	1mg	5mg	10mg
1 mM	2.1065 mL	10.5323 mL	21.0646 mL
5 mM	0.4213 mL	2.1065 mL	4.2129 mL
10 mM	0.2106 mL	1.0532 mL	2.1065 mL
50 mM	0.0421 mL	0.2106 mL	0.4213 mL

Please select the appropriate solvent to prepare the stock solution, according to the solubility of the product in different solvents. Please use it as soon as possible.

Note: The dilution table applies only to solid products. For liquid products, please calculate the stock solution based on the stated concentration and/or density.

Reference

- Kim J. Apelin-APJ signaling: a potential therapeutic target for pulmonary arterial hypertension. *Mol Cells*. 2014 Mar;37(3):196-201. doi: 10.14348/molcells.2014.2308. Epub 2014 Mar 3. Review. PubMed PMID: 24608803; PubMed Central PMCID: PMC3969039.
- Ma WY, Yu TY, Wei JN, Hung CS, Lin MS, Liao YJ, Pei D, Su CC, Lu KC, Liu PH, Lin CH, Chuang LM, Kao HL, Lin JW, Chuang YJ, Li HY. Plasma apelin: A novel biomarker for predicting diabetes. *Clin Chim Acta*. 2014 Aug 5;435:18-23. doi: 10.1016/j.cca.2014.03.030. Epub 2014 Apr 8. PubMed PMID: 24721640.
- Topsakal S, Akin F, Turgut S, Yaylali GF, Herek D, Ayada C. Relationship of apelin, procalcitonin, and fetuin-A concentrations with carotid intima-media thickness in acromegaly. *Ann Clin Biochem*. 2015 Jul;52(Pt 4):456-61. doi: 10.1177/0004563214562431. Epub 2014 Nov 14. PubMed PMID: 25398764.
- Jeong K, Oh Y, Kim SJ, Kim H, Park KC, Kim SS, Ha J, Kang I, Choe W. Apelin is transcriptionally regulated by ER stress-induced ATF4 expression via a p38 MAPK-dependent pathway. *Apoptosis*. 2014 Sep;19(9):1399-410. doi: 10.1007/s10495-014-1013-0. PubMed PMID: 25052841.

Inhibitor · Natural Compounds · Compound Libraries · Recombinant Proteins

This product is for Research Use Only · Not for Human or Veterinary or Therapeutic Use

Tel:781-999-4286 E_mail:info@targetmol.com Address:34 Washington Street,Wellesley Hills,MA 02481