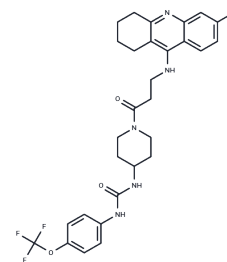


sEH/AChE-IN-1

Chemical Properties

CAS No. : 2490589-08-5
 Formula: C₂₉H₃₁ClF₃N₅O₃
 Molecular Weight: 590.04
 Storage: Powder: -20°C for 3 years | In solvent: -80°C for 1 year
 Actual storage temperature shall be subject to the COA.



Biological Description

Description	sEH/AChE-IN-1 (Compound 12a) is a dual inhibitor of soluble epoxide hydrolase (sEH) and acetylcholinesterase (AChE) with potential research applications in Alzheimer's disease (AD) due to its cumulative effect against neuroinflammation and memory impairment.
Targets(IC50)	Others,Cholinesterase (ChE)

Preparing Stock Solutions

	1mg	5mg	10mg
1 mM	1.6948 mL	8.474 mL	16.948 mL
5 mM	0.339 mL	1.6948 mL	3.3896 mL
10 mM	0.1695 mL	0.8474 mL	1.6948 mL
50 mM	0.0339 mL	0.1695 mL	0.339 mL

Please select the appropriate solvent to prepare the stock solution, according to the solubility of the product in different solvents. Please use it as soon as possible.

Note: The dilution table applies only to solid products. For liquid products, please calculate the stock solution based on the stated concentration and/or density.

Inhibitor · Natural Compounds · Compound Libraries · Recombinant Proteins

This product is for Research Use Only · Not for Human or Veterinary or Therapeutic Use

Tel:781-999-4286 E_mail:info@targetmol.com Address:34 Washington Street,Wellesley Hills,MA 02481