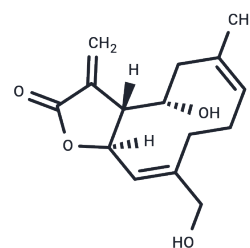


Salonitenolide

Chemical Properties

CAS No. :	26931-94-2
Formula:	C ₁₅ H ₂₀ O ₄
Molecular Weight:	264.32
Storage:	Powder: -20°C for 3 years In solvent: -80°C for 1 year Actual storage temperature shall be subject to the COA.



Biological Description

Description	Salonitenolide is a germacranolide isolated from from <i>Aegialophila pumila</i> Jus. Boiss.
Targets(IC50)	Others

Preparing Stock Solutions

	1mg	5mg	10mg
1 mM	3.7833 mL	18.9165 mL	37.8329 mL
5 mM	0.7567 mL	3.7833 mL	7.5666 mL
10 mM	0.3783 mL	1.8916 mL	3.7833 mL
50 mM	0.0757 mL	0.3783 mL	0.7567 mL

Please select the appropriate solvent to prepare the stock solution, according to the solubility of the product in different solvents. Please use it as soon as possible.

Note: The dilution table applies only to solid products. For liquid products, please calculate the stock solution based on the stated concentration and/or density.

Reference

- Rosselli S, Maggio AM, Raccuglia RA, Morris-Natschke SL, Bastow KF, Lee KH, Bruno M. Acid rearrangement of epoxy-germacranolides and absolute configuration of 1beta,10alpha-epoxy-salonitenolide. *Nat Prod Commun.* 2010 May;5(5):675-80. PubMed PMID: 20521529.
- Trendafilova A, Jadranin M, Gorgorov R, Stanilova M. Bioactive Compounds in Wild, In vitro Obtained, Ex vitro Adapted, and Acclimated Plants of *Centaurea davidovii* (Asteraceae). *Nat Prod Commun.* 2015 Jun;10(6):839-41. PubMed PMID: 26197494.
- Esposito A, Malafrente N, Sanogo R, D'Ambola M, Severino L. Sesquiterpene Lactones from *Vernonia nigritiana*. *Nat Prod Commun.* 2016 May;11(5):583-4. PubMed PMID: 27319122.
- Milošević Ifantis T, Solujić S, Pavlović-Muratspahić D, Skaltsa H. Secondary metabolites from the aerial parts of *Centaurea pannonica* (Heuff.) Simonk. from Serbia and their chemotaxonomic importance. *Phytochemistry.* 2013 Oct;94:159-70. doi: 10.1016/j.phytochem.2013.05.014. Epub 2013 Jul 1. PubMed PMID: 23827325.

Inhibitor · Natural Compounds · Compound Libraries · Recombinant Proteins

This product is for Research Use Only · Not for Human or Veterinary or Therapeutic Use

Tel:781-999-4286 E_mail:info@targetmol.com Address:34 Washington Street,Wellesley Hills,MA 02481