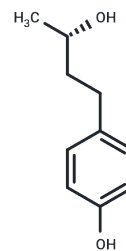


(+)-Rhododendrol

Chemical Properties

CAS No. :	59092-94-3
Formula:	C ₁₀ H ₁₄ O ₂
Molecular Weight:	166.22
Storage:	Keep away from direct sunlight, Keep away from moisture Powder: -20°C for 3 years In solvent: -80°C for 1 year <small>Actual storage temperature shall be subject to the COA.</small>



Biological Description

Description	(+)-Rhododendrol is a natural product capable of inhibiting the proliferation of B16 melanoma cells.
Targets(IC50)	Others

Preparing Stock Solutions

	1mg	5mg	10mg
1 mM	6.0161 mL	30.0806 mL	60.1612 mL
5 mM	1.2032 mL	6.0161 mL	12.0322 mL
10 mM	0.6016 mL	3.0081 mL	6.0161 mL
50 mM	0.1203 mL	0.6016 mL	1.2032 mL

Please select the appropriate solvent to prepare the stock solution, according to the solubility of the product in different solvents. Please use it as soon as possible.

Note: The dilution table applies only to solid products. For liquid products, please calculate the stock solution based on the stated concentration and/or density.

Reference

Fushiya S, et al. (+)-rhododendrol and epi-rhododendrin suppress the NO production by activated macrophages in vivo. *Planta Med.* 1998 Oct;64(7):598-602.

Inhibitor · Natural Compounds · Compound Libraries · Recombinant Proteins

This product is for Research Use Only · Not for Human or Veterinary or Therapeutic Use

Tel: 781-999-4286 E_mail: info@targetmol.com Address: 34 Washington Street, Wellesley Hills, MA 02481