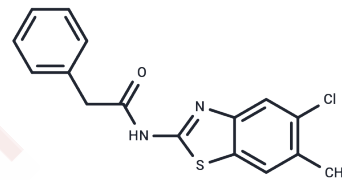


LH846

## Chemical Properties

CAS No. : 639052-78-1  
 Formula: C<sub>16</sub>H<sub>13</sub>ClN<sub>2</sub>O<sub>2</sub>S  
 Molecular Weight: 316.81  
 Storage: Powder: -20°C for 3 years | In solvent: -80°C for 1 year  
*Actual storage temperature shall be subject to the COA.*



## Biological Description

Description	LH846 is a selective inhibitor of CK1δ with IC <sub>50</sub> values of 290 nM for CK1δ, 1.3 μM for CK1ε, and 2.5 μM for CK1α, and exhibits no inhibitory activity at CK2.
Targets(IC <sub>50</sub> )	Casein Kinase

## Solubility Information

Solubility	DMSO: 55 mg/mL (173.61 mM), Sonication is recommended. (< 1 mg/ml refers to the product slightly soluble or insoluble)
In vivo Formulation	10% DMSO+90% Corn Oil: 2.5 mg/mL (7.89 mM), Sonication is recommended. <i>Please add the solvents sequentially, clarifying the solution as much as possible before adding the next one. Dissolve by heating and/or sonication if necessary. Working solution is recommended to be prepared and used immediately. The formulation provided above is for reference purposes only. In vivo formulations may vary and should be modified based on specific experimental conditions.</i>

## Preparing Stock Solutions

	1mg	5mg	10mg
1 mM	3.1565 mL	15.7823 mL	31.5647 mL
5 mM	0.6313 mL	3.1565 mL	6.3129 mL
10 mM	0.3156 mL	1.5782 mL	3.1565 mL
50 mM	0.0631 mL	0.3156 mL	0.6313 mL

Please select the appropriate solvent to prepare the stock solution, according to the solubility of the product in different solvents. Please use it as soon as possible.

Note: The dilution table applies only to solid products. For liquid products, please calculate the stock solution based on the stated concentration and/or density.

Reference

Lee JW, et al. Angew Chem Int Ed Engl. 2011 Nov 4;50(45):10608-11.

**Inhibitor · Natural Compounds · Compound Libraries · Recombinant Proteins**

This product is for Research Use Only · Not for Human or Veterinary or Therapeutic Use

Tel:781-999-4286 E\_mail:info@targetmol.com Address:34 Washington Street,Wellesley Hills,MA 02481