

Vipivotide tetraxetan Linker

Chemical Properties

CAS No. : 1703768-74-4

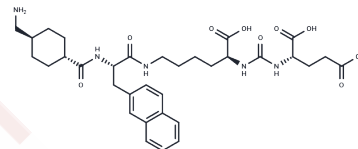
Formula: C33H45N5O9

Molecular Weight: 655.74

Keep away from direct sunlight

Storage: Powder: -20°C for 3 years | In solvent: -80°C for 1 year

Actual storage temperature shall be subject to the COA.



Biological Description

Description	Vipivotide tetraxetan Linker (PSMA-617 Linker) is a noncleavable peptide linker utilized in the synthesis of Vipivotide tetraxetan (PSMA-617), a ligand instrumental in producing ¹⁷⁷ Lu-PSMA-617. This radioactive molecule is applied in the treatment of prostate cancer[1].
Targets(IC50)	ADC Linker,PROTAC Linker

Solubility Information

Solubility	DMSO: 270 mg/mL (411.75 mM),Sonication is recommended. (< 1 mg/ml refers to the product slightly soluble or insoluble)
In vivo Formulation	10% DMSO+40% PEG300+5% Tween-80+45% Saline: 3.3 mg/mL (5.03 mM),Sonication is recommended. <i>Please add the solvents sequentially, clarifying the solution as much as possible before adding the next one. Dissolve by heating and/or sonication if necessary. Working solution is recommended to be prepared and used immediately. The formulation provided above is for reference purposes only. In vivo formulations may vary and should be modified based on specific experimental conditions.</i>

Preparing Stock Solutions

	1mg	5mg	10mg
1 mM	1.525 mL	7.625 mL	15.2499 mL
5 mM	0.305 mL	1.525 mL	3.050 mL
10 mM	0.1525 mL	0.7625 mL	1.525 mL
50 mM	0.0305 mL	0.1525 mL	0.305 mL

Please select the appropriate solvent to prepare the stock solution, according to the solubility of the product in different solvents. Please use it as soon as possible.

Note: The dilution table applies only to solid products. For liquid products, please calculate the stock solution based on the stated concentration and/or density.

Reference

Benešová M, et al. Albumin-Binding PSMA Ligands: Optimization of the Tissue Distribution Profile. Mol Pharm. 2018 Mar 5;15(3):934-946.

Inhibitor · Natural Compounds · Compound Libraries · Recombinant Proteins

This product is for Research Use Only · Not for Human or Veterinary or Therapeutic Use

Tel:781-999-4286 E_mail:info@targetmol.com Address:34 Washington Street,Wellesley Hills,MA 02481