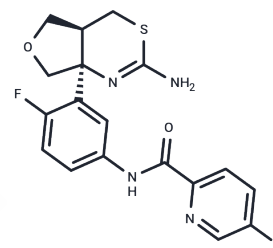


LY2886721

Chemical Properties

CAS No. : 1262036-50-9
 Formula: C₁₈H₁₆F₂N₄O₂S
 Molecular Weight: 390.41
 Storage: Powder: -20°C for 3 years | In solvent: -80°C for 1 year
 Actual storage temperature shall be subject to the COA.



Biological Description

Description	LY2886721, a BACE inhibitor, is used for the therapy of Alzheimer's Disease.
Targets(IC50)	Beta-Secretase,BACE
In vitro	LY2886721 is an oral, small molecule of β -site amyloid protein cleaving enzyme (BACE) inhibitor with the potential to inhibit the synthesis of β -amyloid and thereby to slow the Clinical progression of AD. [1] LY2886721 can also targety-secretase to nhhibit the synthesis of β -amyloid. [2]
Kinase Assay	The CTLs and NK cells (0.8×10 ⁶ /mL) are treated with the inhibitors L1 (10-20 μ M) or Aloxistatin (20-30 μ M) for 24 hr at 37°C in 24-well plates. Cells are then used in 51Cr-release assays or are lysed to examine perforin in Western blots. The inhibitor is also added at the same concentration during the 4 hr reactions in some 51Cr-release assays, as indicated. Cell lysates are prepared using NP-40 lysis buffer (25 mM HEPES, 250 mM NaCl, 2.5 mM ethylenediaminetetraacetic acid, 0.1% volume/volume Nonidet P-40) and total protein concentration is determined using the Bradford assay. Equal amounts of protein are loaded and resolved on 8% SDS-PAGE gels. Human or mouse perforin is detected using the appropriate antibodies as indicated. Anti-actin antibody is used as a loading control[2].

Solubility Information

Solubility	Ethanol: < 1 mg/mL (insoluble or slightly soluble), H ₂ O: < 1 mg/mL (insoluble or slightly soluble), DMSO: 1 mg/mL (2.56 mM),Sonication is recommended. (< 1 mg/ml refers to the product slightly soluble or insoluble)
------------	--

Preparing Stock Solutions

	1mg	5mg	10mg
1 mM	2.5614 mL	12.807 mL	25.6141 mL
5 mM	0.5123 mL	2.5614 mL	5.1228 mL
10 mM	0.2561 mL	1.2807 mL	2.5614 mL
50 mM	0.0512 mL	0.2561 mL	0.5123 mL

Please select the appropriate solvent to prepare the stock solution, according to the solubility of the product in different solvents. Please use it as soon as possible.

Note: The dilution table applies only to solid products. For liquid products, please calculate the stock solution based on the stated concentration and/or density.

Reference

Townsend M, et al. J Alzheimers Dis, 2011, 24 Suppl 2, 43-52.

Inhibitor · Natural Compounds · Compound Libraries · Recombinant Proteins

This product is for Research Use Only · Not for Human or Veterinary or Therapeutic Use

Tel:781-999-4286 E_mail:info@targetmol.com Address:34 Washington Street,Wellesley Hills,MA 02481