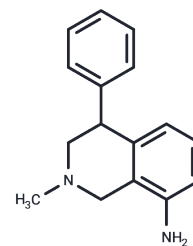


Nomifensine

Chemical Properties

CAS No. :	24526-64-5
Formula:	C ₁₆ H ₁₈ N ₂
Molecular Weight:	238.33
Storage:	Store at low temperature Powder: -20°C for 3 years In solvent: -80°C for 1 year <i>Actual storage temperature shall be subject to the COA.</i>



Biological Description

Description	Nomifensine ((±)-Nomifensin) is a norepinephrine-dopamine reuptake inhibitor that prevents dopamine reuptake into synaptosomes.
Targets(IC50)	Adrenergic Receptor, Dopamine Receptor

Solubility Information

Solubility	DMSO: 270 mg/mL (1132.88 mM), Sonication is recommended. (< 1 mg/ml refers to the product slightly soluble or insoluble)
In vivo Formulation	10% DMSO+40% PEG300+5% Tween 80+45% Saline: 5 mg/mL (20.98 mM), Sonication is recommended. <i>Please add the solvents sequentially, clarifying the solution as much as possible before adding the next one. Dissolve by heating and/or sonication if necessary. Working solution is recommended to be prepared and used immediately. The formulation provided above is for reference purposes only. In vivo formulations may vary and should be modified based on specific experimental conditions.</i>

Preparing Stock Solutions

	1mg	5mg	10mg
1 mM	4.1959 mL	20.9793 mL	41.9586 mL
5 mM	0.8392 mL	4.1959 mL	8.3917 mL
10 mM	0.4196 mL	2.0979 mL	4.1959 mL
50 mM	0.0839 mL	0.4196 mL	0.8392 mL

Please select the appropriate solvent to prepare the stock solution, according to the solubility of the product in different solvents. Please use it as soon as possible.

Note: The dilution table applies only to solid products. For liquid products, please calculate the stock solution based on the stated concentration and/or density.

Reference

Hoffmann I . Pharmacology of Nomifensine[J]. International Pharmacopsychiatry, 1982, 17(S1):4-20.

Deng S, Zhang H, Gou R, et al. Structure-Based Discovery of a Novel Allosteric Inhibitor against Human Dopamine Transporter. Journal of Chemical Information and Modeling. 2023

Inhibitor · Natural Compounds · Compound Libraries · Recombinant Proteins

This product is for Research Use Only · Not for Human or Veterinary or Therapeutic Use

Tel: 781-999-4286 E_mail: info@targetmol.com Address: 34 Washington Street, Wellesley Hills, MA 02481