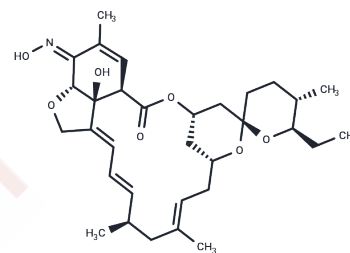


Milbemycin A4 oxime

Chemical Properties

CAS No. :	93074-04-5
Formula:	C ₃₂ H ₄₅ N ₇ O
Molecular Weight:	555.712
Storage:	Powder: -20°C for 3 years In solvent: -80°C for 1 year Actual storage temperature shall be subject to the COA.



Biological Description

Description	Milbemycin A4 oxime, a derivative of milbemycin A4 and a component of milbemycin oxime, exhibits insecticidal and nematocidal activity. At 0.05 mg/kg, it reduces microfilariae of the heartworm <i>D. immitis</i> in naturally infested dogs and inhibits the growth of <i>C. glabrata</i> clinical isolates with MIC ₈₀ values of 16 to >32 µg/ml. At 2.5 µg/ml, it blocks fluconazole efflux from <i>C. glabrata</i> clinical isolates (but not from strains lacking CgCDR1 and PDH1 efflux pumps) and reduces MICs of fluconazole and 4-nitroquinoline 1-oxide in wild-type <i>C. glabrata</i> . Furthermore, it enhances adriamycin-induced inhibition of cell growth, increases intracellular accumulation of adriamycin and the P-glycoprotein substrate rhodamine 123 in adriamycin-resistant, but not adriamycin-sensitive, MCF-7 breast cancer cells in a concentration-dependent manner.
Targets(IC50)	Others,Parasite

Solubility Information

Solubility	DMSO: Soluble Methanol: Soluble DMF: Soluble Ethanol: Soluble (< 1 mg/ml refers to the product slightly soluble or insoluble)
------------	---

Preparing Stock Solutions

	1mg	5mg	10mg
1 mM	1.7995 mL	8.9975 mL	17.995 mL
5 mM	0.3599 mL	1.7995 mL	3.599 mL
10 mM	0.1799 mL	0.8997 mL	1.7995 mL
50 mM	0.036 mL	0.1799 mL	0.3599 mL

Please select the appropriate solvent to prepare the stock solution, according to the solubility of the product in different solvents. Please use it as soon as possible.

Note: The dilution table applies only to solid products. For liquid products, please calculate the stock solution based on the stated concentration and/or density.

Inhibitor · Natural Compounds · Compound Libraries · Recombinant Proteins

This product is for Research Use Only · Not for Human or Veterinary or Therapeutic Use

Tel:781-999-4286 E_mail:info@targetmol.com Address:34 Washington Street,Wellesley Hills,MA 02481