

CP-316819

Chemical Properties

CAS No. : 186392-43-8

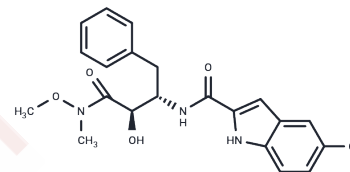
Formula: C₂₁H₂₂ClN₃O₄

Molecular Weight: 415.87

Store at low temperature

Storage: Powder: -20°C for 3 years | In solvent: -80°C for 1 year

Actual storage temperature shall be subject to the COA.



Biological Description

Description	CP-316819 (Gpi 819) is a potent inhibitor of glycogen phosphorylase (GPase) with hypoglycemic effects, inhibits huSMGPa and huLGPa, maintains neuronal activity during hypoglycemia, and can be used in the study of hyperglycemia.
Targets(IC50)	Others,Phosphorylase

Solubility Information

Solubility	Ethanol: <41.59 mg/mL, Sonication is recommended. DMSO: 100 mg/mL (240.46 mM), Sonication is recommended. (< 1 mg/ml refers to the product slightly soluble or insoluble)
In vivo Formulation	10% DMSO+40% PEG300+5% Tween 80+45% Saline: 4 mg/mL (9.62 mM), Sonication is recommended. <i>Please add the solvents sequentially, clarifying the solution as much as possible before adding the next one. Dissolve by heating and/or sonication if necessary. Working solution is recommended to be prepared and used immediately. The formulation provided above is for reference purposes only. In vivo formulations may vary and should be modified based on specific experimental conditions.</i>

Preparing Stock Solutions

	1mg	5mg	10mg
1 mM	2.4046 mL	12.023 mL	24.046 mL
5 mM	0.4809 mL	2.4046 mL	4.8092 mL
10 mM	0.2405 mL	1.2023 mL	2.4046 mL
50 mM	0.0481 mL	0.2405 mL	0.4809 mL

Please select the appropriate solvent to prepare the stock solution, according to the solubility of the product in different solvents. Please use it as soon as possible.

Note: The dilution table applies only to solid products. For liquid products, please calculate the stock solution based on the stated concentration and/or density.

Reference

Baker DJ, et al. Glycogen phosphorylase inhibition in type 2 diabetes therapy: a systematic evaluation of metabolic and functional effects in rat skeletal muscle. Diabetes. 2005 Aug;54(8):2453-9.

Inhibitor · Natural Compounds · Compound Libraries · Recombinant Proteins

This product is for Research Use Only · Not for Human or Veterinary or Therapeutic Use

Tel:781-999-4286 E_mail:info@targetmol.com Address:34 Washington Street,Wellesley Hills,MA 02481