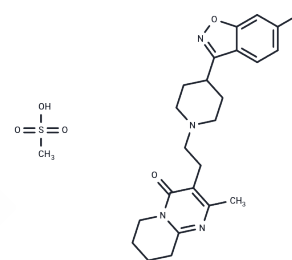


## Risperidone Mesylate

### Chemical Properties

CAS No. :	666179-96-0
Formula:	C <sub>24</sub> H <sub>31</sub> FN <sub>4</sub> O <sub>5</sub> S
Molecular Weight:	506.59
Storage:	Powder: -20°C for 3 years   In solvent: -80°C for 1 year Actual storage temperature shall be subject to the COA.



### Biological Description

Description	Risperidone Mesylate is a selective serotonin 5-HT <sub>2</sub> receptor and dopamine D <sub>2</sub> receptor blocker.
Targets(IC <sub>50</sub> )	Others,5-HT Receptor,Dopamine Receptor,P-gp

### Preparing Stock Solutions

	1mg	5mg	10mg
1 mM	1.974 mL	9.8699 mL	19.7398 mL
5 mM	0.3948 mL	1.974 mL	3.948 mL
10 mM	0.1974 mL	0.987 mL	1.974 mL
50 mM	0.0395 mL	0.1974 mL	0.3948 mL

Please select the appropriate solvent to prepare the stock solution, according to the solubility of the product in different solvents. Please use it as soon as possible.

Note: The dilution table applies only to solid products. For liquid products, please calculate the stock solution based on the stated concentration and/or density.

### Reference

- Termine C, Selvini C, Rossi G, Balottin U. Emerging treatment strategies in Tourette syndrome: what's in the pipeline? *Int Rev Neurobiol.* 2013;112:445-80. doi: 10.1016/B978-0-12-411546-0.00015-9. Review. PubMed PMID: 24295630.
- Greenberg WM, Citrome L. Ziprasidone for schizophrenia and bipolar disorder: a review of the clinical trials. *CNS Drug Rev.* 2007 Summer;13(2):137-77. Review. PubMed PMID: 17627670.
- Bayes M, Rabasseda X, Prous JR. Gateways to clinical trials. *Methods Find Exp Clin Pharmacol.* 2006 Mar;28(2):121-42. PubMed PMID: 16636723.
- SMR Committee. Case histories in drug discovery and design. *Drug News Perspect.* 1998 Feb;11(1):52-7. PubMed PMID: 15616642.

**Inhibitor · Natural Compounds · Compound Libraries · Recombinant Proteins**

This product is for Research Use Only · Not for Human or Veterinary or Therapeutic Use

Tel:781-999-4286 E\_mail:info@targetmol.com Address:34 Washington Street,Wellesley Hills,MA 02481