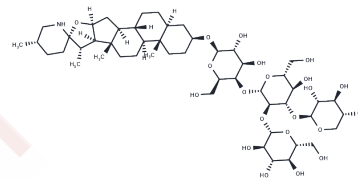


Tomatine

Chemical Properties

CAS No. :	17406-45-0
Formula:	C ₅₀ H ₈₃ N ₂ O ₂₁
Molecular Weight:	1034.19
Storage:	Powder: -20°C for 3 years In solvent: -80°C for 1 year Actual storage temperature shall be subject to the COA.



Biological Description

Description	Tomatine (lycopersicin) is an antiproliferative agent of breast adenocarcinoma cells.
Targets(IC50)	Apoptosis, Proteasome

Solubility Information

Solubility	DMSO: 137.5 mg/mL (132.95 mM), Sonication is recommended. (< 1 mg/ml refers to the product slightly soluble or insoluble)
In vivo Formulation	10% DMSO+40% PEG300+5% Tween 80+45% Saline: 2 mg/mL (1.93 mM), Sonication is recommended. <i>Please add the solvents sequentially, clarifying the solution as much as possible before adding the next one. Dissolve by heating and/or sonication if necessary. Working solution is recommended to be prepared and used immediately. The formulation provided above is for reference purposes only. In vivo formulations may vary and should be modified based on specific experimental conditions.</i>

Preparing Stock Solutions

	1mg	5mg	10mg
1 mM	0.9669 mL	4.8347 mL	9.6694 mL
5 mM	0.1934 mL	0.9669 mL	1.9339 mL
10 mM	0.0967 mL	0.4835 mL	0.9669 mL
50 mM	0.0193 mL	0.0967 mL	0.1934 mL

Please select the appropriate solvent to prepare the stock solution, according to the solubility of the product in different solvents. Please use it as soon as possible.

Note: The dilution table applies only to solid products. For liquid products, please calculate the stock solution based on the stated concentration and/or density.

Reference

Bretschneider A. et al. Know your ABCs: Characterization and gene expression dynamics of ABC transporters in the polyphagous herbivore *Helicoverpa armigera*. *Insect Biochem Mol Biol.* 2016 May;72:1-9.

Kim SP., et al. The Tomato Glycoalkaloid α -Tomatine Induces Caspase-Independent Cell Death in Mouse Colon Cancer CT-26 Cells and Transplanted Tumors in Mice. *J Agric Food Chem.* 2015 Jan 23.

Inhibitor · Natural Compounds · Compound Libraries · Recombinant Proteins

This product is for Research Use Only · Not for Human or Veterinary or Therapeutic Use

Tel:781-999-4286 E_mail:info@targetmol.com Address:34 Washington Street,Wellesley Hills,MA 02481