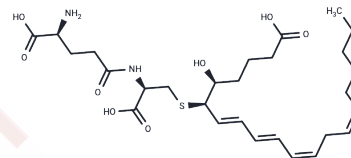


## Leukotriene F4

## Chemical Properties

CAS No. :	83851-42-7
Formula:	C <sub>28</sub> H <sub>44</sub> N <sub>2</sub> O <sub>8</sub> S
Molecular Weight:	568.72
Storage:	Powder: -20°C for 3 years   In solvent: -80°C for 1 year Actual storage temperature shall be subject to the COA.



## Biological Description

Description	LTF4 is a cysteinyl-leukotriene produced in vitro, but not reported to date in vivo. It is formed by the incubation of LTE4 with $\gamma$ -glutamyl transpeptidase and glutathione. LTF4 is a weak agonist in its ability to contract vascular smooth muscle. [1] The rank order of potency of the cysteinyl-leukotrienes to contract vascular smooth muscle is LTD4 > LTC4 > LTE4 >> LTF4. [1] [2]
Targets(IC50)	Others,Endogenous Metabolite,Leukotriene Receptor

## Solubility Information

Solubility	DMF: >50 mg/mL (per Ramki Iyer),Sonication is recommended. Ethanol: >50 mg/mL (per Ramki Iyer),Sonication is recommended. DMSO: >50 mg/mL (per Ramki Iyer),Sonication is recommended. (< 1 mg/ml refers to the product slightly soluble or insoluble)
------------	--

## Preparing Stock Solutions

	1mg	5mg	10mg
1 mM	1.7583 mL	8.7917 mL	17.5833 mL
5 mM	0.3517 mL	1.7583 mL	3.5167 mL
10 mM	0.1758 mL	0.8792 mL	1.7583 mL
50 mM	0.0352 mL	0.1758 mL	0.3517 mL

Please select the appropriate solvent to prepare the stock solution, according to the solubility of the product in different solvents. Please use it as soon as possible.

Note: The dilution table applies only to solid products. For liquid products, please calculate the stock solution based on the stated concentration and/or density.

Reference

Bernstrom, K., and Hammarström, S. A novel leukotriene formed by transpeptidation of leukotriene E4. *Biochemical and Biophysical Research Communications* 109, 800-804 (1982).

Lord, A., Charleson, S., and Letts, L.G. Leukotriene F4 and the release of arachidonic acid metabolites from perfused guinea pig lungs in vitro. *Prostaglandins* 29, 651-660 (1985).

**Inhibitor · Natural Compounds · Compound Libraries · Recombinant Proteins**

This product is for Research Use Only · Not for Human or Veterinary or Therapeutic Use

Tel:781-999-4286 E\_mail:info@targetmol.com Address:34 Washington Street,Wellesley Hills,MA 02481