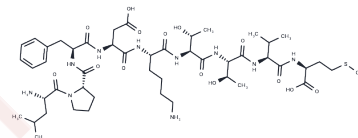


## CEF6

## Chemical Properties

CAS No. :	913545-15-0
Formula:	C48H78N10O14S1
Molecular Weight:	1051.26
Storage:	Keep away from moisture Powder: -20°C for 3 years   In solvent: -80°C for 1 year <small>Actual storage temperature shall be subject to the COA.</small>



## Biological Description

Description	CEF6, a HLA-B7 restricted influenza virus nucleoprotein epitope, belongs to the CEF control peptides. The CEF control peptides are 8-12 amino acids in length, with sequences derived from the human cytomegalovirus, Epstein-Barr virus and influenza virus.
Targets(IC50)	Influenza Virus

## Preparing Stock Solutions

	1mg	5mg	10mg
1 mM	0.9512 mL	4.7562 mL	9.5124 mL
5 mM	0.1902 mL	0.9512 mL	1.9025 mL
10 mM	0.0951 mL	0.4756 mL	0.9512 mL
50 mM	0.019 mL	0.0951 mL	0.1902 mL

Please select the appropriate solvent to prepare the stock solution, according to the solubility of the product in different solvents. Please use it as soon as possible.

Note: The dilution table applies only to solid products. For liquid products, please calculate the stock solution based on the stated concentration and/or density.

## Reference

Yu K, et al. shRNA-mediated NP knockdown inhibits the apoptosis of cardiomyocytes induced by H1N1 pdm2009 influenza virus. Mol Med Rep. 2017 Aug;16(2):1376-1382.

**Inhibitor · Natural Compounds · Compound Libraries · Recombinant Proteins**

This product is for Research Use Only · Not for Human or Veterinary or Therapeutic Use

Tel:781-999-4286 E\_mail:info@targetmol.com Address:34 Washington Street,Wellesley Hills,MA 02481