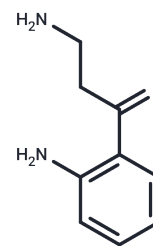


Kynuramine

Chemical Properties

CAS No. :	363-36-0
Formula:	C ₉ H ₁₂ N ₂ O
Molecular Weight:	164.20
Storage:	Powder: -20°C for 3 years In solvent: -80°C for 1 year Actual storage temperature shall be subject to the COA.



Biological Description

Description	Kynuramine is an aromatic ketone containing the aniline structure.
Targets(IC50)	Others, Monoamine Oxidase

Preparing Stock Solutions

	1mg	5mg	10mg
1 mM	6.0901 mL	30.4507 mL	60.9013 mL
5 mM	1.218 mL	6.0901 mL	12.1803 mL
10 mM	0.609 mL	3.0451 mL	6.0901 mL
50 mM	0.1218 mL	0.609 mL	1.218 mL

Please select the appropriate solvent to prepare the stock solution, according to the solubility of the product in different solvents. Please use it as soon as possible.

Note: The dilution table applies only to solid products. For liquid products, please calculate the stock solution based on the stated concentration and/or density.

Reference

- Niu S, Li F, Tan DX, Zhang L, Idle JR, Gonzalez FJ, Ma X. Analysis of N1-acetyl-N2-formyl-5-methoxykynuramine/N1-acetyl-5-methoxy-kynuramine formation from melatonin in mice. *J Pineal Res.* 2010 Sep; 49(2):106-14. doi: 10.1111/j.1600-079X.2010.00771.x. Epub 2010 May 27. PubMed PMID: 20545825; PubMed Central PMCID: PMC4699585.
- Pomfret DW, Schenck KW, Fludzinski P, Cohen ML. Interaction of 5-hydroxykynurenamine, L-kynurenine and kynuramine with multiple serotonin receptors in smooth muscle. *J Pharmacol Exp Ther.* 1987 May;241(2):465-71. PubMed PMID: 3572806.
- Charlton KG, Johnson TD, Hamed AT, Clarke DE. Cardiovascular actions of kynuramine and 5-hydroxykynuramine in pithed rats. *J Neural Transm.* 1983;57(4):199-211. PubMed PMID: 6140297.
- Johnson TD, Clarke DE. An alpha-adrenoceptor inhibitory action of kynuramine. *Eur J Pharmacol.* 1981 Jul 10;72(4):351-6. PubMed PMID: 6115758.

Inhibitor · Natural Compounds · Compound Libraries · Recombinant Proteins

This product is for Research Use Only · Not for Human or Veterinary or Therapeutic Use

Tel:781-999-4286 E_mail:info@targetmol.com Address:34 Washington Street,Wellesley Hills,MA 02481