

## N-Methyl-(chroman-6-ylmethyl)amine

## Chemical Properties

CAS No. : 950603-17-5

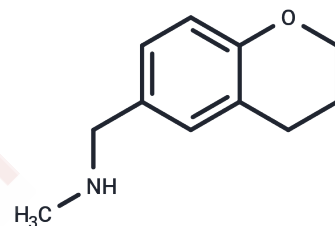
Formula: C<sub>11</sub>H<sub>15</sub>NO

Molecular Weight: 177.25

Store under nitrogen

Storage: Pure form: -20°C for 3 years | In solvent: -80°C for 1 year

Actual storage temperature shall be subject to the COA.



## Biological Description

Description	N-Methyl-(chroman-6-ylmethyl)amine, with CAS No. 950603-17-5, is a fragment molecule that serves as an important scaffold for molecular linking, expansion, and modification. N-Methyl-(chroman-6-ylmethyl)amine provides a structural basis and research tool for the design and screening of novel drug candidates, and is commonly used in drug discovery, drug synthesis, and related research.
-------------	---

## Preparing Stock Solutions

	1mg	5mg	10mg
1 mM	5.6417 mL	28.2087 mL	56.4175 mL
5 mM	1.1283 mL	5.6417 mL	11.2835 mL
10 mM	0.5642 mL	2.8209 mL	5.6417 mL
50 mM	0.1128 mL	0.5642 mL	1.1283 mL

Please select the appropriate solvent to prepare the stock solution, according to the solubility of the product in different solvents. Please use it as soon as possible.

Note: The dilution table applies only to solid products. For liquid products, please calculate the stock solution based on the stated concentration and/or density.

Inhibitor · Natural Compounds · Compound Libraries · Recombinant Proteins

This product is for Research Use Only · Not for Human or Veterinary or Therapeutic Use

Tel: 781-999-4286 E\_mail: info@targetmol.com Address: 34 Washington Street, Wellesley Hills, MA 02481