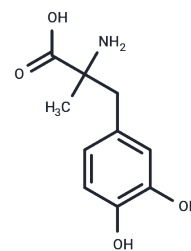


Methyldopa anhydrous

Chemical Properties

| | |
|-------------------|---|
| CAS No. : | 55-40-3 |
| Formula: | C ₁₀ H ₁₃ NO ₄ |
| Molecular Weight: | 211.21 |
| Storage: | Powder: -20°C for 3 years In solvent: -80°C for 1 year Actual storage temperature shall be subject to the COA. |



Biological Description

| | |
|---------------|---|
| Description | Methyldopa anhydrous is a Central alpha-2 Adrenergic Agonist. The mechanism of action of methyldopa anhydrous is as an Adrenergic alpha2-Agonist. |
| Targets(IC50) | Others |

Preparing Stock Solutions

| | 1mg | 5mg | 10mg |
|-------|-----------|------------|------------|
| 1 mM | 4.7346 mL | 23.6731 mL | 47.3462 mL |
| 5 mM | 0.9469 mL | 4.7346 mL | 9.4692 mL |
| 10 mM | 0.4735 mL | 2.3673 mL | 4.7346 mL |
| 50 mM | 0.0947 mL | 0.4735 mL | 0.9469 mL |

Please select the appropriate solvent to prepare the stock solution, according to the solubility of the product in different solvents. Please use it as soon as possible.

Note: The dilution table applies only to solid products. For liquid products, please calculate the stock solution based on the stated concentration and/or density.

Inhibitor · Natural Compounds · Compound Libraries · Recombinant Proteins

This product is for Research Use Only · Not for Human or Veterinary or Therapeutic Use

Tel: 781-999-4286 E_mail: info@targetmol.com Address: 34 Washington Street, Wellesley Hills, MA 02481