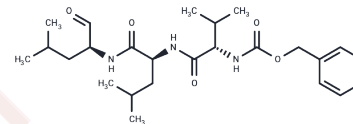


$\beta$ -Secretase Inhibitor II

## Chemical Properties

CAS No. :	263563-09-3
Formula:	C <sub>25</sub> H <sub>39</sub> N <sub>3</sub> O <sub>5</sub>
Molecular Weight:	461.59
Storage:	Powder: -20°C for 3 years   In solvent: -80°C for 1 year Actual storage temperature shall be subject to the COA.



## Biological Description

Description	$\beta$ -Secretase Inhibitor II is a tripeptide aldehyde inhibitor of $\beta$ -Secretase with an inhibitory potency of IC <sub>50</sub> = 700 nM against total A $\beta$ and IC <sub>50</sub> = 2.5 $\mu$ M against A $\beta$ [1-42]. This compound, with a simple structure, is particularly useful in Alzheimer's disease research.
Targets(IC <sub>50</sub> )	Others, Beta-Secretase
In vitro	$\beta$ -Secretase Inhibitor II, a simple tripeptide aldehyde, exhibits inhibitory activity on the formation of both total amyloid beta (A $\beta$ ) and A $\beta$ 1-42, with IC <sub>50</sub> values of 700 nM and 2.5 $\mu$ M, respectively. This compound demonstrates dose-dependent inhibition[1].

## Preparing Stock Solutions

	1mg	5mg	10mg
1 mM	2.1664 mL	10.8321 mL	21.6642 mL
5 mM	0.4333 mL	2.1664 mL	4.3328 mL
10 mM	0.2166 mL	1.0832 mL	2.1664 mL
50 mM	0.0433 mL	0.2166 mL	0.4333 mL

Please select the appropriate solvent to prepare the stock solution, according to the solubility of the product in different solvents. Please use it as soon as possible.

Note: The dilution table applies only to solid products. For liquid products, please calculate the stock solution based on the stated concentration and/or density.

## Reference

Abbenante, G., et al. Inhibitors of  $\beta$ -Amyloid Formation Based on the  $\beta$ -Secretase Cleavage Site. Biochemical and Biophysical Research Communications. 2000; 268(1), 133-135.

**Inhibitor · Natural Compounds · Compound Libraries · Recombinant Proteins**

This product is for Research Use Only · Not for Human or Veterinary or Therapeutic Use

Tel:781-999-4286 E\_mail:info@targetmol.com Address:34 Washington Street,Wellesley Hills,MA 02481