

A-54556B

Chemical Properties

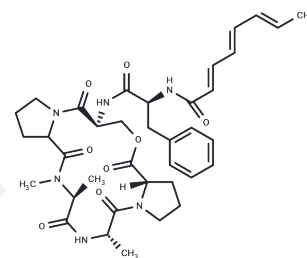
CAS No. : 1629166-56-8

Formula: C₃₇H₄₈N₆O₈

Molecular Weight: 704.825

Storage: Powder: -20°C for 3 years | In solvent: -80°C for 1 year

Actual storage temperature shall be subject to the COA.



Biological Description

| | |
|---------------|--|
| Description | A-54556B is a natural acyldepsipeptide (ADEP) antibiotic isolated from the fermentation broth of <i>S. hawaiiensis</i> . Like the closely related ADEP, A-54556A, A-54556B is effective against Gram-positive bacteria, including penicillin-resistant <i>S. aureus</i> . A-54556B is also effective against many strains of anaerobic bacteria. |
| Targets(IC50) | Others, Antibacterial |

Solubility Information

| | |
|------------|--|
| Solubility | Methanol: Soluble DMF: Soluble Ethanol: Soluble DMSO: Soluble (< 1 mg/ml refers to the product slightly soluble or insoluble) |
|------------|--|

Preparing Stock Solutions

| | 1mg | 5mg | 10mg |
|-------|-----------|-----------|------------|
| 1 mM | 1.4188 mL | 7.0939 mL | 14.1878 mL |
| 5 mM | 0.2838 mL | 1.4188 mL | 2.8376 mL |
| 10 mM | 0.1419 mL | 0.7094 mL | 1.4188 mL |
| 50 mM | 0.0284 mL | 0.1419 mL | 0.2838 mL |

Please select the appropriate solvent to prepare the stock solution, according to the solubility of the product in different solvents. Please use it as soon as possible.

Note: The dilution table applies only to solid products. For liquid products, please calculate the stock solution based on the stated concentration and/or density.

Inhibitor · Natural Compounds · Compound Libraries · Recombinant Proteins

This product is for Research Use Only · Not for Human or Veterinary or Therapeutic Use

Tel:781-999-4286 E_mail:info@targetmol.com Address:34 Washington Street,Wellesley Hills,MA 02481