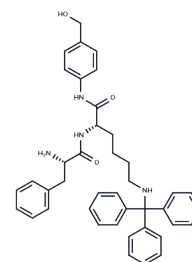


Phe-Lys(Trt)-PAB

Chemical Properties

CAS No. :	1116085-99-4
Formula:	C ₄₁ H ₄₄ N ₄ O ₃
Molecular Weight:	640.81
Storage:	Keep away from direct sunlight Powder: -20°C for 3 years In solvent: -80°C for 1 year <small>Actual storage temperature shall be subject to the COA.</small>



Biological Description

Description	Phe-Lys(Trt)-PAB is a cathepsin-cleavable linker used in the development of antibody-drug conjugates (ADCs), serving as a crucial component for releasing therapeutic agents within targeted cells.
Targets(IC50)	ADC Linker, PROTAC Linker
In vitro	ADCs are comprised of an antibody to which is attached an ADC cytotoxin through an ADC linker[2].

Preparing Stock Solutions

	1mg	5mg	10mg
1 mM	1.5605 mL	7.8026 mL	15.6052 mL
5 mM	0.3121 mL	1.5605 mL	3.121 mL
10 mM	0.1561 mL	0.7803 mL	1.5605 mL
50 mM	0.0312 mL	0.1561 mL	0.3121 mL

Please select the appropriate solvent to prepare the stock solution, according to the solubility of the product in different solvents. Please use it as soon as possible.

Note: The dilution table applies only to solid products. For liquid products, please calculate the stock solution based on the stated concentration and/or density.

Reference

Abu Ajaj K, et al. Development of protein-binding bifunctional linkers for a new generation of dual-acting prodrugs. *Bioconjug Chem.* 2009 Feb;20(2):390-6.

Beck A, et al. Strategies and challenges for the next generation of antibody-drug conjugates. *Nat Rev Drug Discov.* 2017 May;16(5):315-337.

Inhibitor · Natural Compounds · Compound Libraries · Recombinant Proteins

This product is for Research Use Only · Not for Human or Veterinary or Therapeutic Use

Tel:781-999-4286 E_mail:info@targetmol.com Address:34 Washington Street,Wellesley Hills,MA 02481